

- Direktorat Jenderal Perhubungan Udara. *Cetak Biru Transportasi Udara 2005-2024*, Maret 2005.
- David, F.R., *Strategic Management Concept*, Tenth Edition. New Jersey: Prentice-Hall International Inc, 2005.
- Garuda Indonesia Training Center, 2007, Website: www.garuda-indonesia.com
- Hamel, G. and C.K. Prahalad, "Competing for the Future", *Harvard Business Review*, 1994
- Indocommercial. No 351 – 16, *Perkembangan Dan Prospek Industri Penerbangan Di Indonesia*, Nopember 2004.
- IndoFlyer, *Batavia Air Resmi Memiliki Training Center*, Oktober 2004.
- Jauch Lawrence R. and Glueck F. William, *Manajemen Strategis dan Kebijakan Perusahaan*, Edisi ketiga, 1997, PT. Gelora Aksara Pratama, Jakarta.
- Koncoro Mudrajad, *Strategi Bagaimana Meraih Keunggulan Kompetitif*, Penerbit Erlangga, Jakarta, 2006
- Jurnal Manajemen Transportasi, Sekolah Tinggi Manajemen Transpor Trisakti vol IV No 2, *Faktor-faktor Esensial dalam Persaingan Bisnis Perusahaan Penerbangan di Indonesia*, Juli 2003.
- Majalah Angkasa, *Bersinergi Mendidik Pemikir*, Mei 2001 .
- Mintzberg, H. and Quinn, J. B., *The Strategy Process: Concepts, Contexts, Cases*, 2nd edition. New Jersey: Prentice-Hall International Inc, 1995.
- Pearce II, J.A. dan Robinson Jr. R.B., *Strategic Management Strategy Formulation and Implementation, and Control*, Eight Edition, Richard D. Irwin, Inc, Boston, 2003.
- Porter, M.E., *Competitive Strategy: Techniques for Analyzing Industries and Competitor*, The Free Press, New York, 1980.
- Porter, M.E., *Competitive Advantage: Creating and Sustaining Superior Performance*, The Free Press, New York, 1985.
- Rue, L.W. dan Holland, P.G., *Strategic Management Concept and Experiences*, McGrawHill, Singapore, 1989.

Sinar Harapan., *Bisnis Jasa Titipan Berkembang Pesat Tanpa Didukung Regulasi yang Memadai*, 2002.

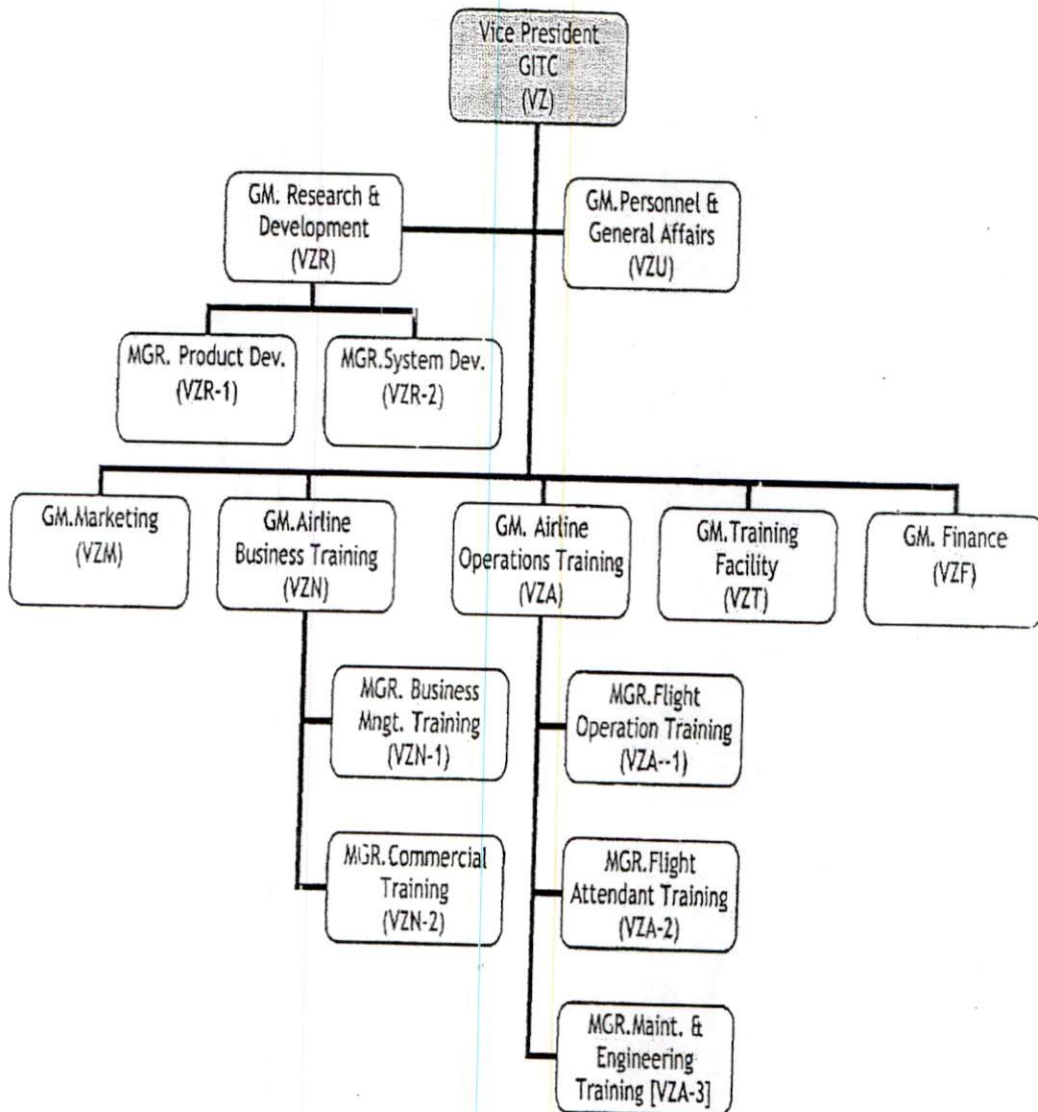
Sinar Harapan., *Industri Penerbangan Padat Peraturan, Karya, dan Modal*, 2003.

Thompson Arthur A. and A. J. Strickland III., *Strategic Management Concepts and Cases*, 9th Edition, Irwin Inc, 1996.

Thompson, A.A. And A.J. Strickland, *Strategic Management, Concepts And Cases*. McGraw-Hill, 2003.

Urban, Glen L., and Star, Seven H., *Advanced, Marketing Strategy: Phenomena, Analysis, and Decisions*, Prentice-Hall Inc., Englewood Cliffs, New Jersey, 1991.

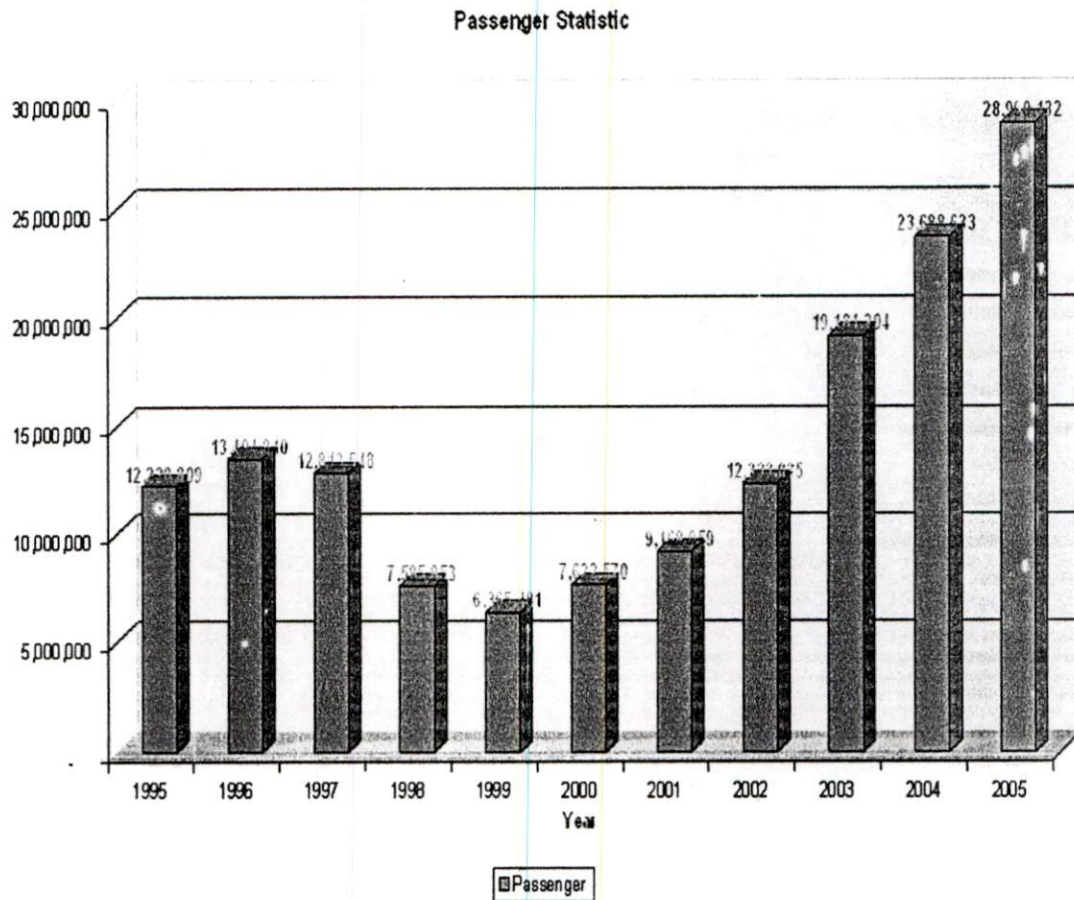
Wheelen, T.L. dan Hunger J.D., *Strategic Management and Business Policy*, Addison-Wesley Publishing Company, Massachusetts, 1992.



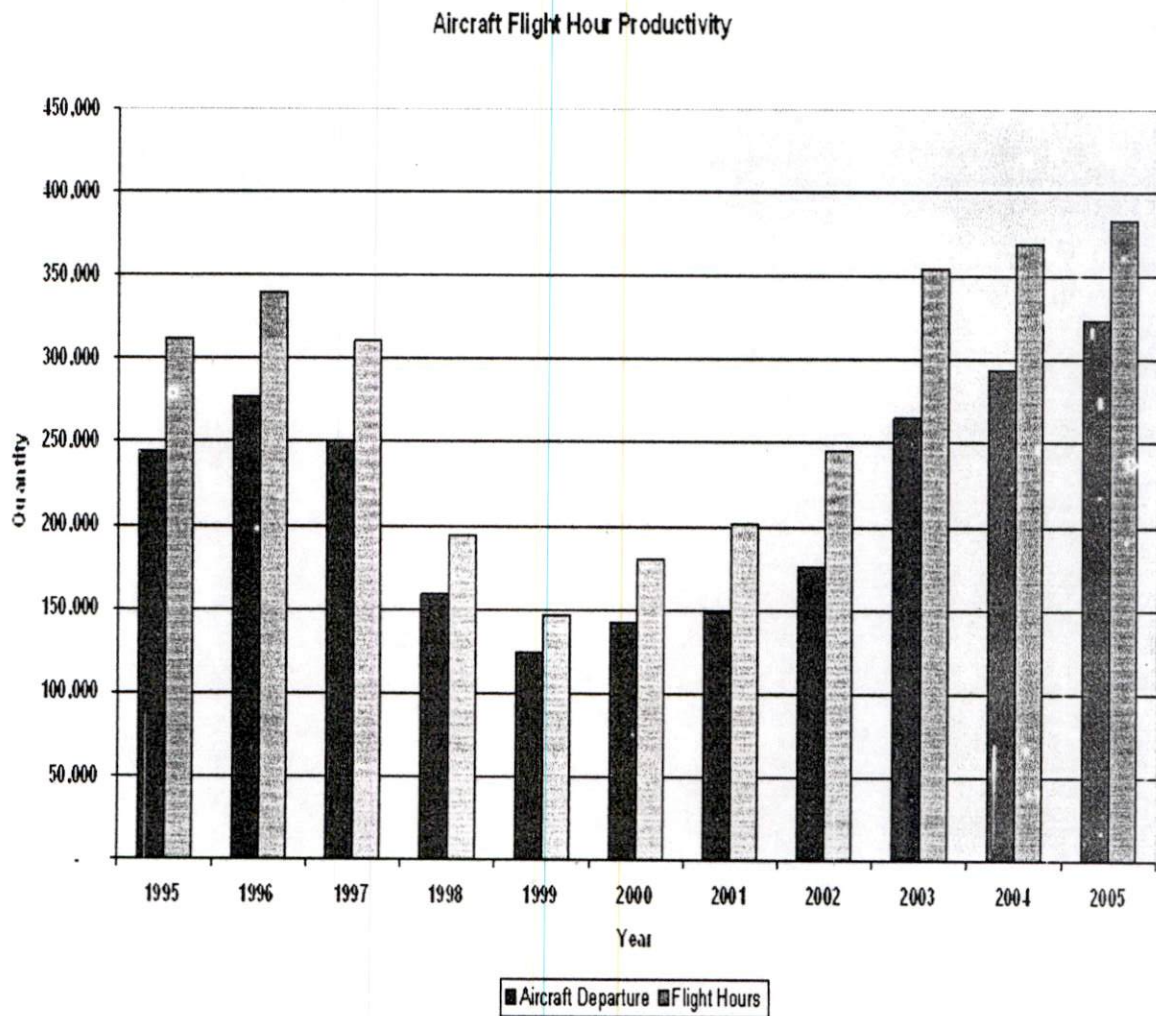
**AIR CARRIERS TRAFFIC DATA
AND
ACCIDENT/INCIDENT DATA
YEAR 1995 - 2005**

NO	YEAR	AIRCRAFT DEPARTURE	PASSENGER CARRIED	AIRCRAFT				PASSENGER		
				HOUR	ACCIDENT	INCIDENT	TOTAL	INJURY	FATAL	TOTAL
01	1995	244,596	12,220,809	311,832	10	19	29	21	26	47
02	1996	276,543	13,494,810	339,809	12	19	31	16	21	37
03	1997	250,584	12,813,548	310,437	11	6	17	22	280	302
04	1998	158,825	7,585,853	194,438	0	16	16	2	0	2
05	1999	124,554	6,365,481	146,624	2	16	18	0	0	0
06	2000	142,056	7,622,570	180,640	1	5	6	21	0	21
07	2001	148,890	9,168,059	201,206	3	17	20	1	4	5
08	2002	176,300	12,333,035	245,145	5	9	14	12	16	28
09	2003	264,906	19,181,294	354,409	3	10	13	0	0	0
10	2004	293,612	23,688,633	368,919	11	3	14	218	25	243
11	2005	323,400	28,900,132	383,059	7	7	14	6	113	119
AVERAGE		218,570	13,943,111	276,047	6	12	17	29	44	73

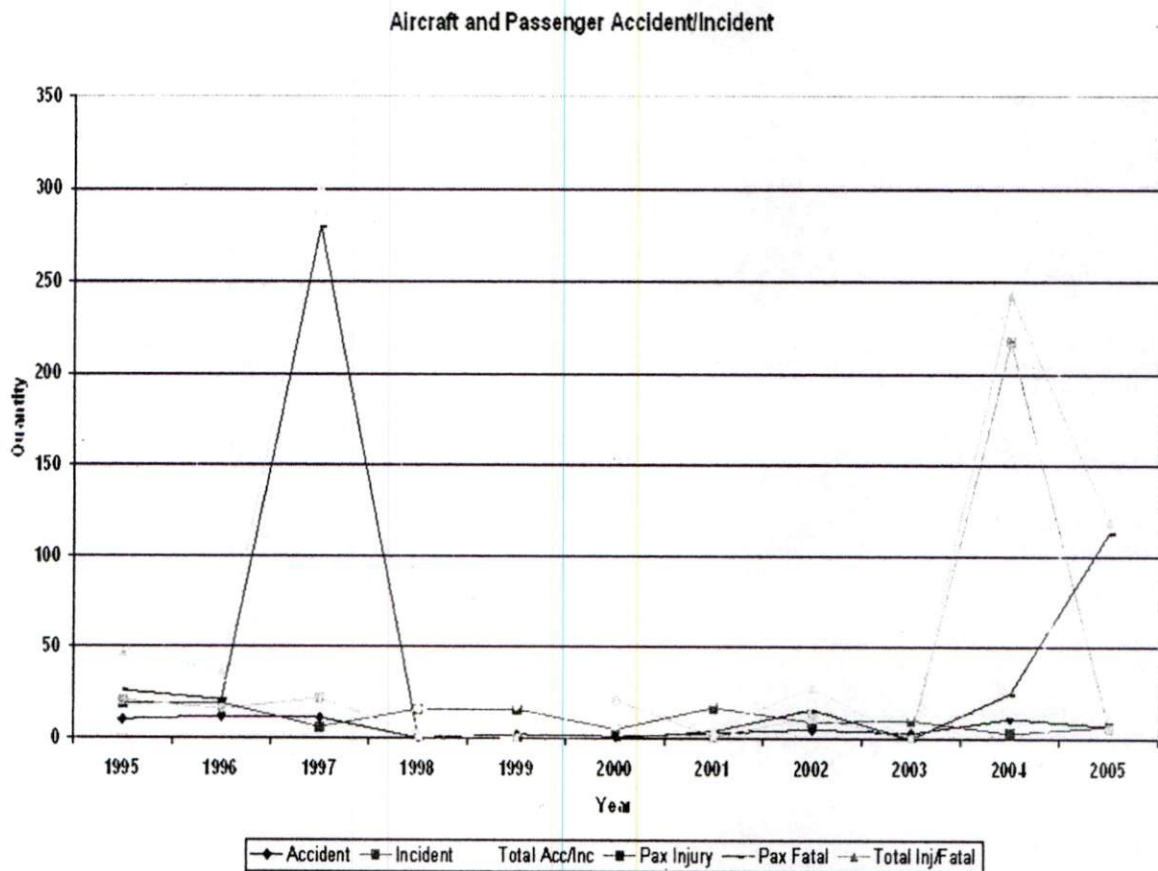
PASSENGER CARRIED PER YEAR



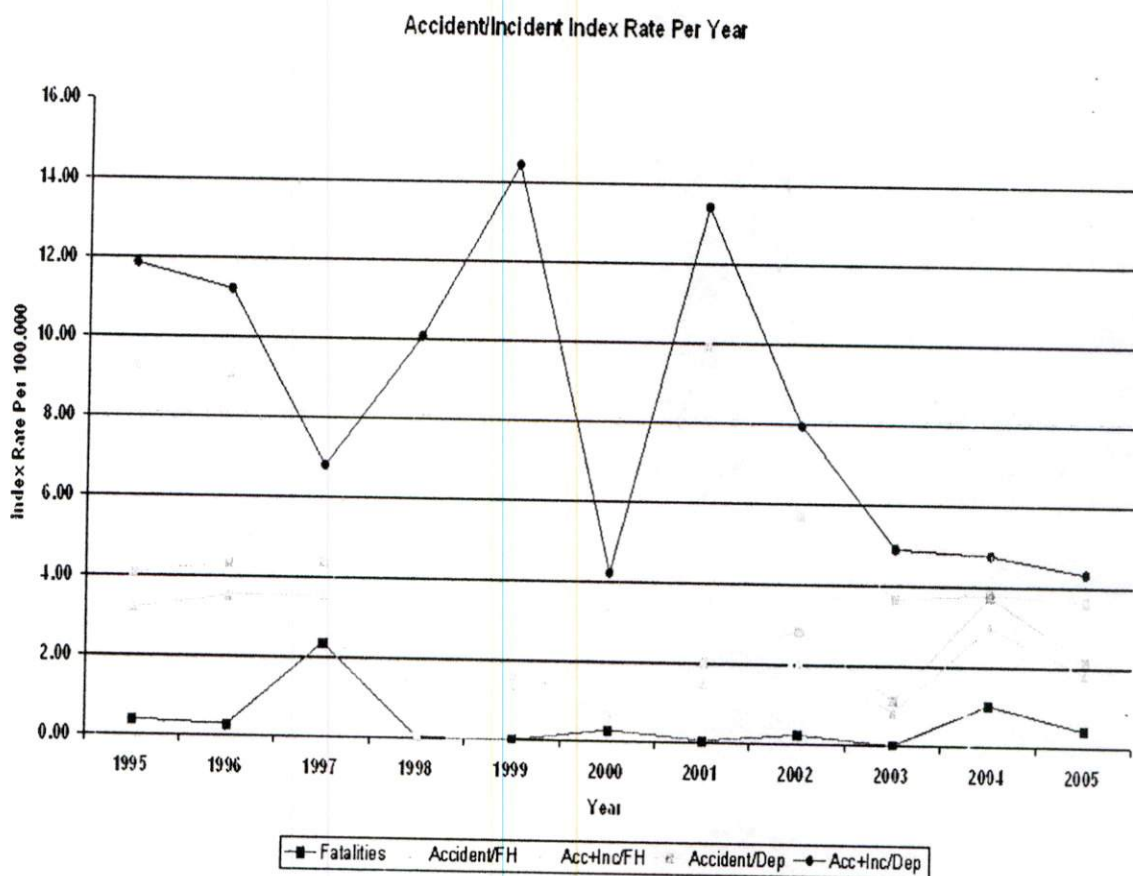
AIRCRAFT FLIGHT HOUR PRODUCTIVITY



AIRCRAFT AND PASSENGER ACCIDENT/INCIDENT



ACCIDENT/INCIDENT INDEX RATE PER YEAR



Perkembangan arus penumpang domestik & internasional

Nama perusahaan	2000	2001	2002	2003	2004
Domestik					
PT.Batavia Air			370,206	1,204,287	526,618
PT.Bouraq Indonesia	713,014	521,881	1,102,365	1,723,052	594,144
PT.Mandala Airlines	1,015,056	1,243,880	1,681,513	2,011,209	1,060,021
PT.Merpati Nusantara	1,690,805	1,951,237	2,305,186	3,408,613	485,093
PT.Garuda Indonesia	3,861,287	4,409,891	4,679,566	5,631,868	1,527,420
PT.Dirgantara Air Service	123,444	127,896	107,269	108,538	27,556
PT.Air Mark Indonesia		36,651	36,087	19,095	
PT.Awair International	116,291	208,376	28,749		
PT.Bayu Indonesia Air	26,449	42,213	4,673		
PT.Kartika Airlines		51,215	45,674		
PT.Star Air		77,548	373,610	699,315	696,243
PT.Pelita Air Service	32,769	244,228	303,783	151,892	
PT.Jatayu Gelang Sejahtera		71,359	460,471	460,471	
PT.Lion Mentari Airline	43,455	181,684	833,883	3,078,838	3,779,182
PT.Deraya					70,662
PT.Wing Abadi					51,732
PT.Seulawa NAD				31,256	
PT.Bali Air				516,656	
Total Domestik	7,622,570	9,168,059	12,333,035	19,095,170	8,818,671
Internasional					
PT.Merpati Nusantara	50,297	82,326	92,877	92,877	
PT.Garuda Indonesia	2,068,656	2,199,359	2,263,289	1,648,932	518,782
PT. Lion Mentari Airline	9,486	224,975	221,864	324,111	255,610
PT.Bayu Indonesia Air	36,983	21,527	1,927		
PT.Awair International	36,983	21,527	1,927		
Total Internasional	2,165,422	2,530,855	2,579,957	2,065,920	774,392

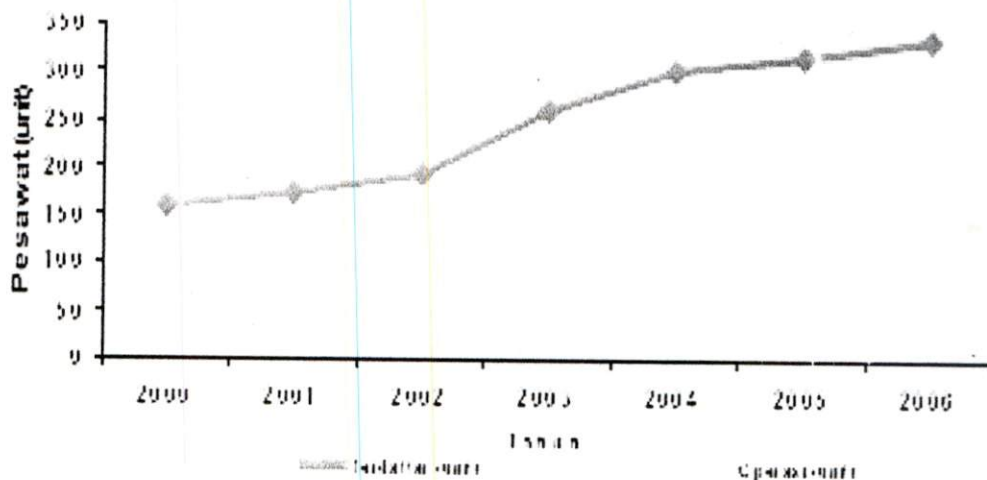
*) Januari – Juni

Sumber : Ditjen Perhubungan Udara/INDOCOMMERCIAL diolah

Lampiran 8:

Jumlah Kumulatif Armada Udara Niaga Berjadwal Nasional 2000 – 2006

E.2.a Jumlah Kumulatif Armada Udara Niaga Berjadwal Nasional, 2000 - 2006



Tahun	Terdaftar (unit)	Operasi (unit)	% Pertumbuhan Operasi	% Operasi terddaftar
2000	160	116	--	0.73
2001	174	131	16.18	0.75
2002	192	143	9.93	0.74
2003	200	193	34.97	0.74
2004	200	222	15.03	0.74
2005	211	211	-4.05	0.68
2006	223	226	6.16	0.68