

## DAFTAR PUSTAKA

- Aoyama, T. & Chua, Nam-Hai. 1997. A Glucocorticoid-mediated Transcriptional Induction System in Transgenic Plants. *The Plant Journal*, 11(3):605-612.
- Bashir, K., Rafiq, M., Fatima, T., Tayyab, H., & Riazuddin, S. 2004. Hygromycin Based Selection of Transformants in A Local Inbred Line of *Zea mays* (L.). *Pakistan Journal of Biological Sciences* 7. ISSN1028-8880. P:318-323.
- Berleth, T. 1998. Experimental Approaches to *Arabidopsis* Embryogenesis. *Plant Physiol-Biochem*, 36:69-82.
- Bio-Rad Laboratories Inc. 2006. *Real-Time PCR Applications Guide*. Bio Rad Laboratories, Inc.
- Caddell, D. F., Wei, T., Park, C.J., & Ronald, P. C. 2015. The Use of A Dexamethasone-inducible System to Synchronize *Xa21* Expression to Study Rice Immunity. *Bio Protocol*, 1-9.
- Chardin, C., Girin, T., Roudier, F., Meyer, C., and Krapp, A. 2014. The Plant RWP-RK Transcription Factors: Key Regulators of Nitrogen Responses And Gametophyte Development. *Journal of Experimental Botany*, 65(19):5577-5587 Doi:10.1093/jxb/eru261.
- Chen, X. Q., Nagao, N., Itani, T., & Irifune, K. 2012. Anti-oxidative Analysis, And Identification And Quantification Of Anthocyanin Pigments In Different Coloured Rice. *Food Chemistry*, 135:2783-2788.
- Choi, S., Seo, H-S., Lee, K-R., Lee, S., & Lee, J. 2018, Effect of Milling Degrees on Volatile Profiles of raw and Cooked Black Rice (*Oryza sativa* L. cv Sintoheugmi). *Applied Biological Chemistry*, 61(1):91-105.
- Choi, S., Seo, H-S., Lee, K-R., Lee, S., & Lee, J. 2018. Effect of Cultivars and Milling Degrees on Free and Bound phenolic Profiles and Antioxidant Activity of Black rice. *Applied Biological Chemistry*, 61(1):49-60.
- Craft, J., Samalova, M., Baroux, C., Townley, H., Martinez, A., Jepson, I., Tsiantis, M., & Moore, I. 2005. New *pOp/LhG4* Vectors for Stringent Glucocorticoid-dependent Transgene Expression in *Arabidopsis*. *Plant Journal*. 41, 899-918
- Fauzia, Anisa N., 2017. *Overekspresi Gen OsRKD4 Pada Padi Hitam (Oryza sativa L. 'Cempo Ireng') Untuk Induksi Embriogenesis Somatik*. Yogyakarta. Universitas Gadjah Mada.
- Gaj, M. D. 2001. Direct Somatic Embryogenesis as A Rapid and Efficient System for *In Vitro* Regeneration of *Arabidopsis thaliana*. *Plant Cell and Organ Culture*, 64:39-46.
- Gupta, H.S., Pattanayak, A., Bhuyan, R.N., & Pandey, D.K. 1989. Cytokinin Mediated Induction of Embryogenic Calli and Plant Regeneration in *indica* Rice (*Oryza sativa*). *Indian Journal of Agricultural Science*, 59(8):526-258
- Handoyo, Darmo & Rudiretna, Ari. 2000. *General Principles and Implementation of Polymerase Chain Reaction (PCR)*. P:17-29.

- Horstman, A., Bemer, M., & Boutilier, K. 2017. A Transcriptional View on Somatic Embryogenesis. *Review Journal: Regeneration*. John Wiley & Sons Ltd. 4:201-216
- Jahan, Papia, Hossain, A., Nasiruddin, K.M., Yasmin, S., Khatun, F., & Parvej, S. 2015. mRNA Extraction, cDNA Synthesis and Tillering Specific Gene Isolation from BLB Resistant Binashail Rice. *Asian Journal of Medical and Biological Research*. ISSN 2411-4472. P:265-270
- Jati, IRAP, Nohr, D., & Biesalski, H.K. 2014. Nutrients and Antioxidant Properties of Indonesian Underutilized Colored Rice. *Nutrition & Food Science*, 44(3):193-203.
- Joubes J., De Schutter, K., Verkest, A., Inze, D., De Veylder, L. 2004. Conditional, Recombinase-Mediated Expression of Genes in Plant Cell Cultures. *Journal of Plant J*, 37:889-896.
- Kang, Y., Fang, Y., & Singh, K. B. 1999. A Glucocorticoid-Inducible Transcription System Causes Serve Growth Defects in *Arabidopsis thaliana* and Induces Defense-Related genes. *The Plant J*, 20(1):127-133.
- Keer, Jacquie T. 2007. Quantitative Real-time PCR Analysis. *Article Chapter 7*. LGC, Queens Road, Teddington, TW11 0LY. P:132-164
- Kim, M. S., Baek, S-H., Park, S-U., Im, K-H., & Kim, J.K. 2017. Targeted Metabolite Profiling to Evaluate Unintended Metabolic Changes of Genetic Modification in Resveratrol-enriched Rice (*Oryza sativa* L.). *Applied Biological Chemistry*, 60(2):205-214.
- Kinkema, M., Fan, W., & Dong, X. 2000. Nuclear Localization of NPRI is required for Activation of PR Gene Expression. *Journal of Plant Cell*, 12:2339-2350.
- Kristamtini, Taryono, Basunanda P., Murti, R.H., Supriyanta, Widyayanti, S., & Sutarno. 2012. Morphological of Genetic Relationship Among Black Rice Landraces from Yogyakarta and Surrounding Areas. *ARPN Journal of Agricultural & Biological Science*, 7(2):982-989.
- Kushwaha, U. 2016. Black Rice. *Black Rice: Research, History, and development*. Berlin. Springer. P:21-47
- Livak, K. J., & Schmittgen, T.D. 2001. Analysis of relative Gene Expression Data Using Real-Time Quantitative PCR and The  $2^{-\Delta\Delta Ct}$  Method. *Methods*, 25:402-408.
- Lloyd, A.M., Schena, M., Walbot, V., Davis, R.W. 1994. Epidermal Cell Fate Determination in *Arabidopsis* : Pattern Defined by a Steroid-Inducible Regulator. *Journal of Science*, 266:436-439.
- Moore, I., Samalova, M., & Kurup, S. 2006. Transactivated and Chemically Inducible Gene Expression in Plants. *Journal of Plant J*, 45:651-683.
- Newton, C. R. & Graham, A. 1994. *PCR*. UK: Bios Scientific Publisher.
- Ouwerkerk, Pieter B.F., de Kam, R.J., Hoge, J.H.C., & Meijer, A.H. 2001. Glucocorticoid-Inducible Gene Expression in Rice. *Planta*. Springer-Verlag, 213:370-378.
- Padidam, M. 2003. Chemically Regulated Gene Expression in Plants. *Journal of Curr Opin Plant Biol*, 6:169-177.
- Park, Chang-Jin, Canlas, P. E., & Ronald, P. C. 2012. Establishment of Glucocorticoid-Mediated Transcriptional Induction of The Rice XA21

- Pattern Recognition Receptor. *Journal of Plant Biology*, 43-49. DOI:10.1007/s12374-011-9188-1.
- Pathak, MD. 1982. The Genetic Evaluation and Utilization Program at IRRI. P:3. In *Rice Tissue Culture Planning Conference. International Rice Research Institute*. Los Banos, Philippines.
- Pfeiffer, A., Janocha, D., Dong, Y., Medzihradsky, A., Schöne, S., Daum, G., Suzuki, T., Forner, J., Langenecker, T., Rempel, E., Schmid, M., Wirtz, M., Hell, R., & Lohmann, J.U. 2016. Integration Of Light And Metabolic Signals for Stem Cell Activation at The Shoot Apical Meristem. *eLife Science*. P:1-21.
- Picard, D. 1994. Regulation of Protein Function Through Expression of Chimeric Proteins. *Journal of Curr Opin Biotechnol*, 5:511-515
- Pokorny, J., Yanishlieva, N., and Gordon, M. 2001. Antioxidant in Food: Practical Application. New York (US).CRC Pr. P:87-331.
- Pratiwi, R. & Purwestri, Y. A. 2017. Black Rice as A Functional Food in Indonesia. *Functional Food in Health and Disease*, 7(3):182-194.
- Purwestri, Yekti A., Sari, Resta D. K., Anggraeni, L. N., & Sasongko, A. B. 2015. *Agrobacterium tumefaciens* Mediated Transformation of *rolC::Hd3a-GFP* in Black Rice (*Oryza sativa* L. cv. Cempo Ireng) to Promote Early Flowering. *Procedia Chemistry*. Published by Elsevier B.V. P:469-473.
- Radoeva, T. & Weijers, D. 2014. A Roadmap to Embryo Identity in Plants. *Trends in Plants Science*. Cell Press: Elsevier Ltd. P:709-714.
- Samalova, M., Brzobohaty, B., & Moore, I. 2005. *pOp/LhGR*: A Stringently Regulated and Highly Responsive Dexamethasone-Inducible Gene Expression System for *Tobacco*. *Plant Journal*, 41:919-935.
- Sambrook, J. and Russel, D. W. 2001. *Molecular Cloning A Laboratory Manual*. 3<sup>rd</sup> Ed. Cold Spring Harbor Laboratory Press. New York. P:1-51.
- Santos, C. F. dos, Sakai, V. T., Machado, M. A. de A. M., Schippers, D. N., & Greene, A. S. 2004. *Reverse transcription and polymerase chain reaction: principles and applications in dentistry*. *Journal of Applied Oral Science*, 12(1):1–11. doi:10.1590/s1678-77572004000100002
- Sassi, M. & Vernoux, T. 2013. Auxin and Self-organization at the Shoot Apical Meristem. *Journal of Experimental Botany*, 64:2579-2590.
- Schmittgen, T.D., & Livak, K.J. 2008. Analyzing Real-time PCR Data by The Comparative C(T) Method. *Nat Protoc*, 44:8-31.
- Shinta, Indriyani, S., & Arisoesilarningsih, E. 2014. Morphological Variation of Six Pigmented Rice Local Varieties Grown in Organic Rice Field in Sengguruh Village, Kepanjen District, Malang regency. *The Journal of Tropical Life Science*. 4(2):149-150.
- Simon, R., Igeno, M.I., Coupland, G. 1996. Activation of Floral Meristem Identity Genes in *Arabidopsis*. *Journal of Nature*, 384:59-62.
- Solekh, Rofiatun, Susanto, Febri A., Joko, T., Nuringtyas, Tri R., & Purwestri, Yekti A. 2019. Phenylalanine Ammonia Lyase (PAL) Contributes to the resistance of Black Rice Against *Xanthomonas oryzae* pv. *Oryzae*. *Journal of Plant Pathology*. Springer. P:6-7

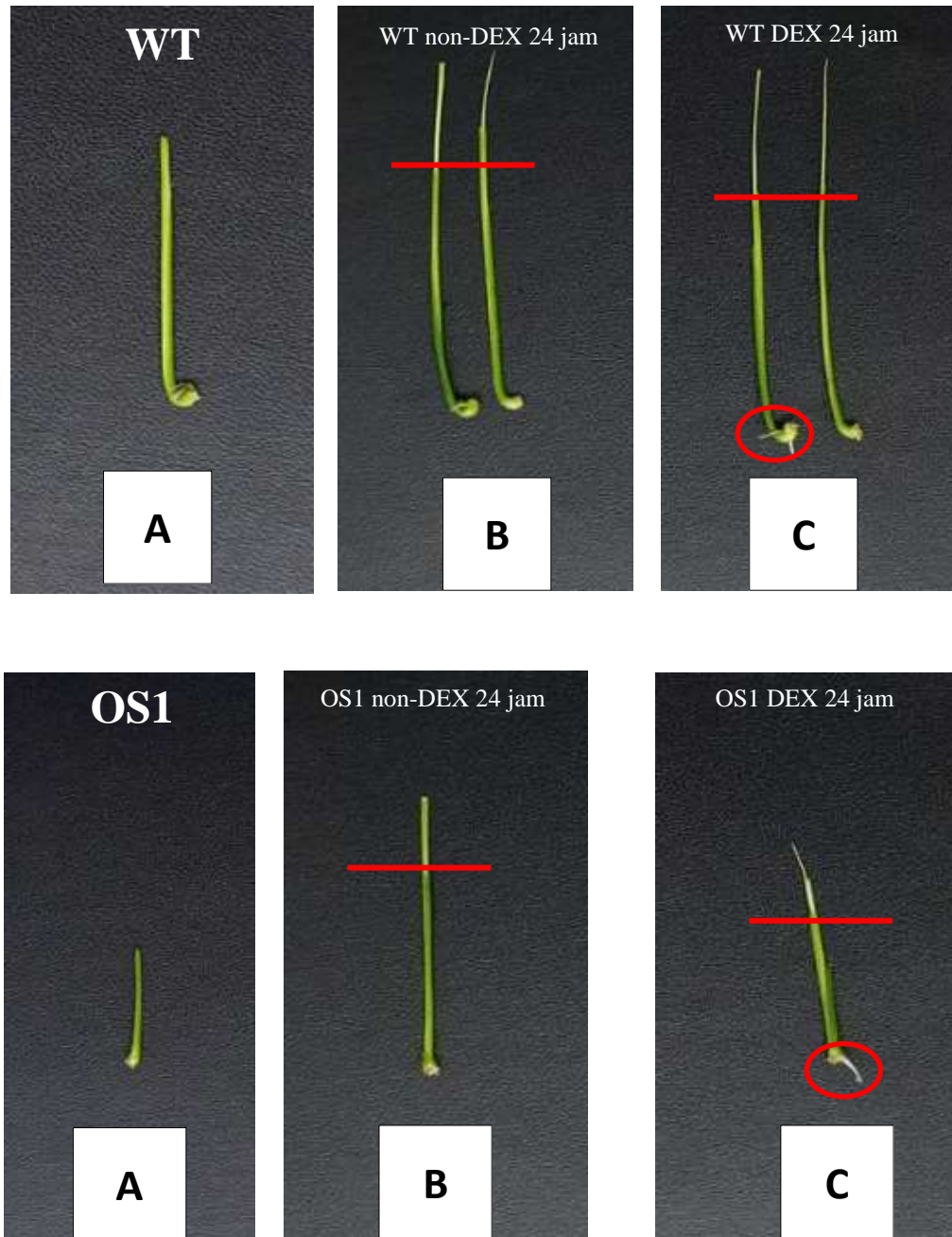
- Steeves, T. A. & Sussex, I. M. 1989. *Pattern in Plant Development*. New York. Cambridge University Press. NY.
- Susanto, F. A., Wijayanti, P., Fauzia, A. N., Komalasari, R. D., Nuringtyas, T. R., & Purwestri, Y. A. 2020. Establish of A Plant Tissue Culture System and Genetic Transformation for Agronomic Improvement of Indonesian Black Rice (*Oryza sativa* L.). *Plant Cell, Tissue and Organ Culture (PCTOC)*. Springer Link. P:605-617
- Sutrisno, Susanto, Febri A., Wijayanti, P., Retnoningrum, Mita D., Nuringtyas, Tri R., Joko, T., & Purwestri, Yekti A. 2018. Screening of Resistant Indonesian Black Rice Cultivars Against Bacterial Leaf Blight. *Journal :Euphytica*, 214(199):1-12. Springer Nature.
- Thomson, M. J., Endang, M., Septiningsih, Suwardjo, F., Santoso, T. J., & McCouch, S. R. 2006. Genetic Diversity Analysis of Traditional and Improved Indonesian Rice (*Oryza sativa* L.) Germplasm Using Microsatellite Markers. *Theor Appl Genet*, 114:559-568.
- USA Rice Federation. 2008.URL. [www.usarice.com](http://www.usarice.com). Accessed 30.07.19.
- Vandesompele, Jo. 2002. *qPCR Guide*. Eurogentec: Experience tru partnership. PP:6-66
- Vlad, D., Samalova, M., Abu-Jamous, B., Wang, P., Moore, I.R., & Langdale, J.A. 2019. Optimization of A Modular Steroid-Inducible gene Expression System for Use in Rice. *BioRxiv Preprint*. UK. South Parks Rd., Oxford OX1 3RB.
- Waki, Takamitsu, Hiki, T., Watanabe, R., Hashimoto, T., & Nakajima, K. 2011. The *Arabidopsis* RWP-RK Protein *RKD4* Triggers gene Expression and Patternn Formation in Early Embryogenesis. *Current Biology 21*. Elsevier Ltd. 21(15):1278-1281.
- Wiendi. N.M.A., Wattimena, G.A., & Gunawan, L.V. 1991. Perbanyakan Tanaman. *Bioteknologi Tanaman I*. PAU IPB. H:507
- Wijayanti, Putri. 2018. *Karakterisasi Fenotipik dan Molekuler Padi Hitam Transgenik (Oryza sativa L. ;Cempo Ireng') Pembawa Gen OsRKD4*. Yogyakarta. Universitas Gadjah Mada.
- Xia, X., Ling W, Ma, J., Xia, M., Hou, M., Wang, Q., Zhu, L., & Tang, Z.. 2006. An Anthocyanin-rich Extract from Black Rice Enhances Atherosclerotic Plaque Stabilization in Apolipoprotein e-deficient Mice. *The Journal of Nutrition: Nutrition and Disease*. P:2220-2225.
- Xu, J.W., Zhu, Z., & Li, X.G. 2001. Isolation and Identification of Starch Synthase cDNA Using A Simple Procedure Based On PCR. *High Tech Comm*, 8:1-6.
- Yang, D.S., Lee, K-S., Dumri, K., Jongkaewwattana, S., & Siri, B. 2007. Characterization of Volatile Aroma Compounds in Cooked Black Rice. *Journal of Agriculture and Food Chemistry*, 56(1):235-240.
- Zimmerman, L. 1993. Somatic Embryogenesis: A Model for Early Development In Higher Plants. *Plant Cell*, 5:1411-1423.
- Zuo, J. & Chua, N.H. 2000. Chemical-Inducible System for Regulated Expression of Plant Genes. *Journal: Curr Opin Biotechnol*, 11:146-151.

**Lampiran 1.** Perlakuan Induksi gen *OsRKD4* tanpa dan dengan *Dexamethasone*

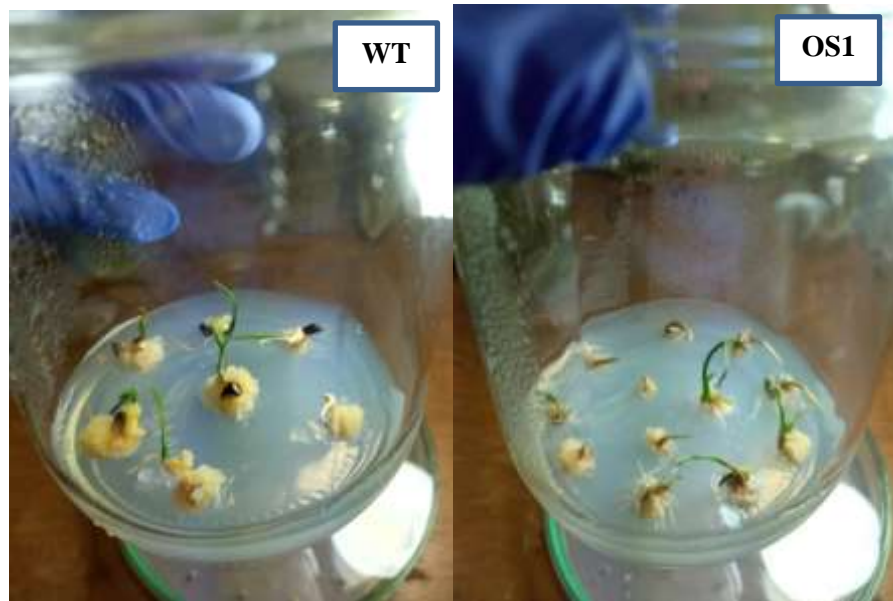
Daun Muda Non-DEX				
Sampel	qPCR 2	qPCR 3	RATA2	STDEV
Kontrol/WT 0 Jam	1,00	1,00	1,00	0,00
WT 24 Jam	3,58	1,68	2,63	1,34
OS1 0 Jam	2,58	4,34	3,46	1,25
OS1 24 Jam	6,17	2,77	4,47	2,41
Daun Muda Dex				
Sampel	qPCR 2	qPCR 3	RATA2	STDEV
Kontrol/WT 0 Jam	1,00	1,00	1,00	0,00
WT 24 Jam	0,01	0,01	0,01	0,00
OS1 0 Jam	1,31	3,37	2,34	1,46
OS1 24 Jam	29,98	34,52	32,25	3,21



**Lampiran 2.** Perlakuan tanpa DEX dan dengan DEX pada kultur *seedling* padi hitam Cempo Ireng WT dan OS1



**Lampiran 3.** Kultur kalus padi hitam kultivar Cempo Ireng galur murni (WT) dan transgenik (OS1).



**Lampiran 4.** Sekuens gen *OsRKD4* dan posisi penempelan primer dengan produk  
191 bp.

GGACAAGTTTGTACAAAAAAGCAGGCTCGAGATGGAAATGCACGAGTGCTGT  
ACTACGGGGGTTCCATCGGAGGCGACTGGCTTAATCCGCTCGCGGCAATACC  
GCCGCCGTGTTTCATCATCCAGCTCATCGTGGTCTAGCCAGCTGCTGCTGCTCT  
CGGACCATGCAGATGTGTTGCTCCACAGCGCCGGCGATCACGGAGGGGCGGT  
GGCGGGAATTGGCGGTGCCTGTATGACTGCTGATCTGGTGGTGAGGGACGAG  
GAGATGGAGATGGCCGCCGGCTACCTCCCTGTCGCTGCGTCCGCAGCCGCGG  
CGGCGGATGTCGATCACTACATGTACCAGCAGTTCCAGCTTGAGCCCGATCA  
GTTTCGTGTCAACCTTGCCGGCTGTTGCCGTTGCCGTGGCCGCGACAGCAGGGG  
GAGGATCACACGACGACGAACCTCCTCAGGATGCCATTACCGACATCGATTT  
GGATGCATTTGCCGATGCCAGAGATGTGGTTCGTCGGAGTTGGGGAGCCGAAG  
CCCTCTCCCCAGCATACCCTTGACGCTGCAATCGCGCTTCCTGCAGTAGGCGG  
CGGCGGCGCTCATCATTTTCGGAACGCAAGACGATGACGTGAAGTTCGACGTA  
ACCAAACAGCGGAACGATGCTGCGCTCGCTGGCGATGATAGTCTGAGTATGG  
TGATCGTGGAGTCGTACGAGATGGGAATGAGAAGACATGCGGCTGAGCAAG  
AGCAGGAACAGAAGCCAAAGATCATTACCTCAGCAGCCACTACCCTCACGCC  
GCTCCCGCTGCCGCCTCCTCCTCCACCACCACCTAGAGTGACGCGGTCAAGGA  
GAGATGGTAGCTCAGCAGCAACCGCCGGGGGAAAAACGCGCCTTGACCACAT  
AGGATTCGAGGATCTTAGAAGATATTTTACATGCCCATCACAAAGGCAGCG  
CGCGAGATGAATGTGGG