

II. LITERATURE REVIEW

2.1 The Concept of Child-Friendly City

According to data in the statistical office, terminology of “child” means a population aged 0-14 years and has never married. Meanwhile, a “child-friendly city” is a local system of good governance committed to respecting the rights of children. The concept involves children's voices, needs, priorities, and rights form part of public policies, programs, and decisions. Children must have access to child-friendly and sustainable interventions to achieve the Millennium Development Goals laid down by the United Nations. The first phase of CFC planning focuses on community involvement, using children as a key environmental plan. UNICEF believes that the results will be more sustainable if children are involved in urban planning.

In A Practical Guide to Developing Child-Friendly Spaces (CFS), UNICEF states that there are six main principles used for planning, developing and operating child-friendly spaces.

- a. CFS is a safe and secure place for children
- b. CFS provides a supportive and stimulating environment for child growth
- c. CFSs are built within existing structures in society
- d. CFS uses a fully participatory approach to design and implementation
- e. CFS provides support services and integrated programs
- f. CFSs are open and non-discriminatory



2.2 Child-Friendly Community Center in Jakarta

Child-Friendly Community Center (CFCC) is one of the DKI Jakarta Provincial Government's programs to achieve the Child-Friendly City title. The aim of CFCC, based on Governor Decree number 196 the Year 2015 regarding of CFCC Management Guidelines:

- a. Providing open space to fulfill children's rights so that children can live, grow, develop and participate optimally
- b. Providing infrastructure and partnerships to fulfill children's rights to local government and community.
- c. Providing infrastructure and facilities for the implementation of the ten main activities of the PKK programs.
- d. Increasing the provision of green open spaces and areas for groundwater absorption.
- e. Improving the infrastructure and facilities of citizens' social activities, including the development of PKK members ' knowledge and skills.

CFCC concept is a public space in the form of green open spaces or parks equipped with several interesting games and other facilities. Based on Government Rules No. 40 Year 2016, the infrastructure of Child Friendly Community Centers consists of open green space and interactive facilities such as: multi-purpose building (management room, PKK Mart room, library room, lactation room, consultation room) equipped with Closed Circuit Television (CCTV), child / adult toilet, disabled toilet, pantry, warehouse, amphitheater, multifunctional field, play area, slide, swing bench, seesaw, reflection rock, nutrition garden, and fish pool.

The number of CFCC 's administrator is about 4-6 people who are responsible for carrying out all operational and administrative aspects (cleanliness, security, data collection, monitoring, service) with child-friendly and gender treatment. Figure 1 shows the organizational structure of the Child-Friendly Community Center.

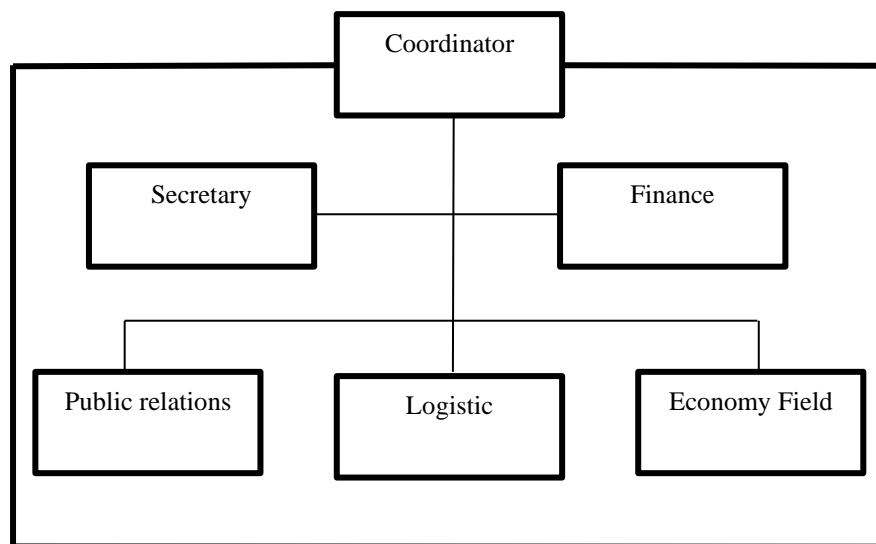


Figure 1. The organizational structure of Child-Friendly Community Center

Source: PPAPP Sub Agency Jakarta Pusat, 2019

2.3 Quality of Child-Friendly Community Center Approach

The research about the child-friendly city was initiated by Kevin Lynch (1977), on the perception of children against urban space. The practice is tested in four selected countries, namely Argentina, Australia, Mexico, and Poland. The aim is to know how a group of teenagers use and assess the spatial environment around them. After that, the concept of child-friendly city was introduced by UNICEF that intent to involve children's participation rights through local child policy goals, policies, programs, and structures (Child Friendly Cities, 2011).



There are four criteria proposed by Lynch: a) Security, non-threatening locations of threatening disturbances, and no obstacles that limit the views of parents on the playground. b) Safety, the surface of the innocuous child, as well as the safe distance from traffic. c) Convenience, availability of facilities required by the child, and prevent interference. d) Reach of service, which is an affordable distance to access the playground.

Ramsey (2015) also mentioned from Lynch Growing Up in Cities research shows that a good city environment for children includes an environment that Integrated in social communities, has a variety of attractive, safe and mobile free space, has a place to meet and interact, have an identity within the community, and have access to green open spaces. Dewi (2010) conducted the research entitled “How Does the Playground Role in Realizing Child-Friendly City?” in Semarang City, Tlogosari Kulon District. The study investigated the role of the playground in realizing child-friendly city regarding Safety, Leisure, Completeness of playing facilities, Accessibility. On the other hand, Buck (1988) analyzed the supervision in the form of inspection and maintenance. Buck (1988) suggested that the inspection and maintenance of CFCC should be involved to prevent the causes of a child's accidents.

The framework suggested by Dewi (2010) and Buck (1988) researches will be adopted and combined in this research with some modifications. The selection to adopt the framework is because it provides comprehensive means to explore the factors affecting the quality of CFCC in a wider societal context and environment. Hence, some modifications are made to match the case study in Tanah Abang, Jakarta Pusat. The research is trying to combine five variables to measure the



quality of Child-Friendly Community Center: Safety, Leisure, Completeness of facilities, Accessibility, and Supervision.

1. Safety

The safety aspect aims to ensure that children are safe from accidents when playing and using game facilities. This is supported by Dewi (2010) who states that the Child Community Center must be free from danger and threats of crime. Access to playgrounds for children is restricted to protecting children from physical interference in order to minimize and properly control crime (Baskara, 2011).

The choice of material game equipment is based on the sensitivity of a child's body to safe material. For example, the bottom surface of the fall zone should be made of sand, synthetic wood fiber, and gravel while the material that is not recommended is asphalt, concrete, grass. On the other hand, incomplete play equipment elements or pieces, such as missing steps in a slide game, can trigger risk (Amalia, 2016). According to Baskara (2011), play areas and corners of the playground must be formed with a high degree of curvature and avoid sharp shapes and corners. Moreover, Baskara asserts that the location of the playground should be physically protected with a fence that is not easily climbed by children. Meanwhile, a safety fence should be made of shrubs, iron, walls or bushes (Amalia, 2016).

2. Leisure

In terms of leisure, Baskara (2011) defines the CFCC should have a playground location shaded by vegetation and in open areas so direct sunlight can be exposed. However, it is also important to provide support facilities and protection against water, sun, and wind (Carr in Rahmawati (2015)).



Furthermore, comfort can be established through the availability of playground resting facilities that are used to relax after playing or waiting for parents and other friends (Baskara, 2011). However, the playground location should not be in an area with a high level of health problems, especially air pollution, water, noise, odors that may influence the play activities of children.

Based on research by Amalia (2016), a convenient location should be far away from landfills, burning, and waste management for children. Waste disposal, placed within a certain distance, for example, every 15-20 meters (Rubensteun in Azzaki (2013)).

3. Completeness of facilities

According to Senda (in Chairunnisa (2011)), the completeness of facilities must be accommodated with a place with children's play facilities. The place can be formed as an open space such as playgrounds and sports fields. Children's play equipment must provide a symbolic high ground.

Amalia (2016) states that children can engage socially with their mates if there are at least 4 forms of play equipment with an appropriate difficulty level. Therefore, they need a venue on a small and large scale to gather and socialize (Senda in Chairunnisa (2011)). In addition, there should be an integrated curriculum in the playroom that involves play, exercise, learning, health, and mental support (Amalia, 2016).

4. Accessibility

Cooper in Chairunnisa (2011) argues that a CFCC has good accessibility if the location of the park is in an area that has the potential for activities such as dense shopping centers, transportation. Placement of park locations in areas with



minimal disturbance to children when the journey reaches the location. Therefore, children of all backgrounds and abilities (including children with physical and mental limitations) can easily access Park Location with good accessibility (Baskara, 2011).

According to Minister of Public Works and Housing regulation No: 30/PRT / M/2006, there must be a pedestrian route with a minimum width of 120 cm for one direction and 160 cm for two directions. The information for the location and gate of the playground should be easily seen and recognized (Baskara, 2011) and there are signs marked with lights in the open area (Rubensteun in Azzaki, 2013).

5. Supervision

Supervisors of CFCC have a very positive impact on CFCC. Therefore, the government, through the urban village, conducts recruitment of managers to be positioned in each CFCC. The minimum number of supervisors may not contribute to optimum supervisory practices (Hasmawati, 2017). Therefore, in one CFCC, there are six supervisors who are divided into two shifts a day. Buck (1988) argues that “if we associate protection with care and maintenance in all playgrounds in our approach to providing and maintaining playgrounds, we will avoid many unnecessary injuries without reducing the enthusiasm, interest, and developmental value of children”.

From the point of view of supervision, it is expected that the placement of designs (trees and poles) will not impede the visibility of parents in the supervision of their children (Amalia, 2016). Based on Malau (2017) research, CCTV is a mandatory facility in every CFCC because it is the main surveillance



tool. The procurement of CCTV is necessary because Child Community Center is a place where most children gather to play or do other activities. If supervisors are negligent in supervision, this makes it easy for child predators to meet their targets.

2.4 Theoretical Framework

Based on the theory discussion, the theoretical framework for this research can be illustrated as Figure 2 :

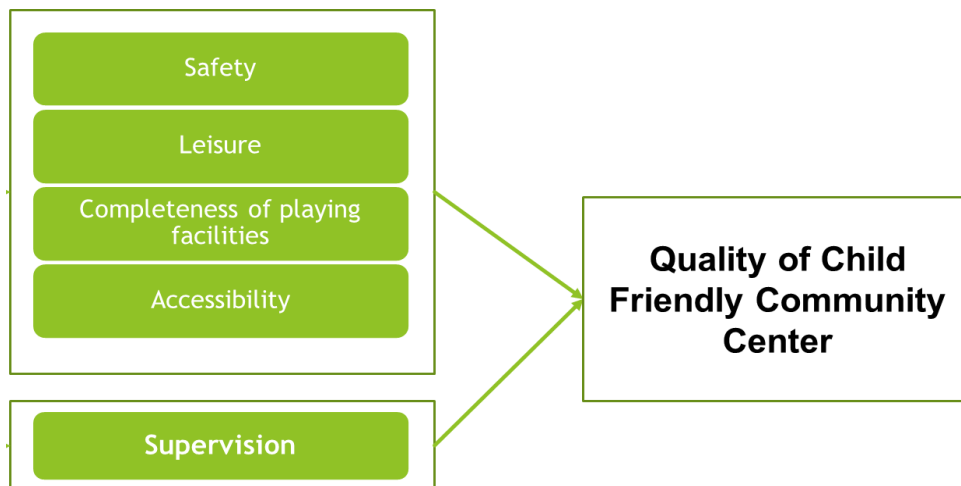


Figure 2. The Theoretical Framework of quality of Child-Friendly Community Center.

Source: Author's illustration