

## Bibliography

- African Development Fund. 2006. "Republic of The Gambia Entrepreneurship Promotion and Microfinance Development Project Appraisal Report."
- Agenor, Pierre-Richard, and Joshua Aizenman. 2004. "Savings and Term of Trade Under Browning Constraints." *Journal of International Economics* 63 (2): 321–40.
- Agénor, Pierre Richard, C. John McDermott, and Eswar S. Prasad. 2000. "Macroeconomic Fluctuations in Developing Countries: Some Stylized Facts." *World Bank Economic Review*. <https://doi.org/10.1093/wber/14.2.251>.
- Ahmed, Monir Uddin, Moniruzzaman Muzib, and Amit Roy. 2013. "Price-Wage Spiral in Bangladesh: Evidence from ARDL Bound Testing Approach." *International Journal of Applied Economics* 10 (September): 77–103.
- Almukhtar, Saif Al-Abri and Azmat, Gani. 2014. "National Saving and Terms-of-Trade: The Harberger-Laursen-Metzler Effect Revisited." *Department of Economics and Finance, Sultan Qaboos University*, 1–12.
- Ando, Albert, and Franco Modigliani. 1963. "The 'Life Cycle' Hypothesis of Saving: Aggregate Implications and Tests." *The American Economic Review* 53 (1): 55–84. <https://doi.org/10.1126/science.151.3712.867-a>.
- Athukorala, P.C, and K. Sen. 2004. "The Determinants of Private Saving in India." *World Development* 32 (3): 491–503.
- Attanasio, Orazio P., Lucio Picci, and Antonello E. Scorcu. 1997. "Saving, Growth, and Investment: A Macroeconomic Analysis Using A Panel of Countries." *The Review of Economics and Statistics*.
- Ayalew, Ademe. 2013. "Determinants of Domestic Saving in Ethiopia: An Autoregressive Distributed Lag (ARDL) Bounds Testing Approach." *Journal of Economics and International Finance* 5 (6): 248–57. <https://doi.org/10.5897/JEIF2013.0526>.
- Bagehot, Walter. 1873. *Lambert Street. A Description of the Definition of Money. CreateSpace Independent Publishing Platform*.
- Baharumshah, Ahmad Z., and Marwan A. Thanoon. 2003. "Determinants of Gross National Saving In Malaysia: A Macroeconomic Analysis 1960-2000." *Giordano Dell-Amore Foundation* 27 (4): 421–40.
- Baldé, Yéro. 2011. "The Impact of Remittances and Foreign Aid on Savings/Investment in Sub-Saharan Africa\*." *African Development Review* 23 (2): 247–62. <https://doi.org/10.1111/j.1467-8268.2011.00284.x>.
- Basnet, Hem C. 2013. "Foreign Aid, Domestic Savings, and Economic Growth in South Asia." *International Business & Economics Research Journal* 12 (11): 1389–94.
- Bauer, P.T. 1971. *Dissent on Development, Weidenfield and Nicholson*. London.
- Beverly, Sondra, Michael Sherraden, Reid Cramer, Trina R Williams Shanks, Yunjun Nam, and Min Zhan. 2008. "Determinants of Asset Holdings." *Asset Building and Low-Income Families*, no. March 2006: 89–151.
- Boone, Peter. 1996. "Politics and the Effectiveness of Aid." *European Economic Review* 40 (272): 289–329. [https://doi.org/10.1016/0014-2921\(95\)00127-1](https://doi.org/10.1016/0014-2921(95)00127-1).
- Brumberg, Richard and Modigliani, Franco. 1954. "Utility Analysis and the Consumption Function: An Interpretation of Cross-Section Data." *In Post-*

- Keynesian Economics*, Edited by K. K. Kurihara. New Brunswick, NJ: Rutgers University Press.
- Carroll, Christopher D., and David N. Weil. 1993. "Saving and Growth: A Reinterpretation." *NBER Working Paper*.
- Casal, Julian, De Nicola Francesca, Toure Ibrahima Fatouma, I. De Kleine Feige Annette, and Marchat Jean-Michel. 2015. "The Gambia: Policies to Foster Growth Volume II. Macroeconomy, Finance, Trade and Energy." *Document of the World Bank*.
- Chenery, Hollis B., and Allan M. Strout. 1966. "Foreign Assistance and Economic Development." *American Economic Review* 56 (7): 679–732.
- Chowdhury, Abdur. 2015. "Terms of Trade Shocks and Private Savings in the Developing Countries." *Journal of Comparative Economics* 43 (4): 1122–34. <https://doi.org/10.1016/j.jce.2015.02.006>.
- Cline, William. 1995. *International Debt Reexamined*. Washington D,C Institute of International Economics.
- Coale, Ansley Johnson, and Edgar Malone Hoover. 1958. "Population Growth and Economic Development in Low-Income Countries." *The American Economic Review* 49 (3): 436–38.
- Country Watch. 2017. "Gambia 2017 Country Review." <http://www.countrywatch.com/Intelligence/CountryReviews?CountryId=136>
- Davidson, R, and J.G MacKinnon. 1999. "The Size Distortion of Bootstrap Tests." *Econometric Theory* 15: 361–376.
- Davidson, Russell, and James G. Mackinnon. 1983. "Inflation and the Savings Rate." *Applied Economics* 15 (6): 731–43. <https://doi.org/10.1080/000368483000000062>.
- Dayal-Gulati, A., and C. Thimann. 1997. "Saving in Southeast Asia and Latin America Compared: Searching for Policy Lesson." *IMF Working Paper, WP/97/110*.
- Deaton, Angus. 1977. "Involuntary Saving through Unanticipated Inflation." *The American Economic Review* 67 (5): 899–910.
- Edward, Sabastian. 1995. "Why Are Latin America's Saving Rate So Low? An International Comparative Analysis." *Paper Presented at the Frist Annual Latin American Conference on Development Economics, World Bank, Rio de Janeiro*.
- Edwards, Sebastian. 1996. "Why Are Latin America's Saving Rates So Low?" *Journal of Development Economics* 51: 5–44.
- Elbadawi, I. A, and F M. Mwega. 1998. "Can Africa's Saving Collapse Reverted?" *A Paper Prepared for the World Bank's Project on "Saving Across the World: Puzzles, and Policies*.
- Eur. 2003. *Africa South of the Sahara*. 32nded. Routledge.
- Frank, Harrigan. 1996. "Saving Transitions in Southeast Asia." *Asian Development Bank*.
- Friedman, Milton. 1957. "A Theory of the Consumption Function." In *National Bureau of Economic Research*. Vol. 63. Princeton University Press.
- Fry, Maxwell. 1995. *Money, Interest, and Banking in Economic Development*. 2nd Editio.
- Gavin, Michael, Ricardo Hausmann, and Ernesto Talvi. 1997. "Saving Behavior in

- Latin America: Overview and Policy Issues.”
- Gavin, Micheal. 1990. “Structural Adjustment to a Terms of Trade Disturbance: The Role of Relative Prices.” *Journal of International Economics* 28: 217–43.
- Gersovitz, Mark. 1988. “Savings and Development.” In *H. Chenery and T. Srinivasan, Eds, Handbook of Development Economics*. North-Holland, Amsterdam.
- Giovannini, Alberto. 1985. “Saving and the Rate of Interest in LDCs.” *Journal of Development Economics* 18 (January 1983): 197–217.
- Griffin K. B. and Enos J. L. 1970. “Foreign Assistance: Objectives and Consequences.” *Economic Development and Cultural Change* 18 (3): 313–27.
- Gupta, Kanhaya L. 1971. “Dependency Rates and Savings Rates.” *The American Economic Review* 61 (3): 469–71.
- Harberger, Arnold C. 1950. “Currency Depreciation, Income and the Balance of Trade.” *Journal of Political Economy* 58 (1): 47–60.
- Heintz, James, Carlos Oya, and Eduardo Zepeda. 2008. “Towards an Employment-Centred Development Strategy for Poverty Reduction in the Gambia: Macroeconomic and Labour Market Aspects.” *International Poverty Center*, no. 16.
- Horioka, Charles Yuji, and Wakō Watanabe. 1997. “Why Do People Save? A Micro-Analysis of Motives for Household Saving in Japan.” *The Economic Journal* 107 (442): 537–52. <https://doi.org/10.1111/j.1468-0297.1997.tb00026.x>.
- Hurd, Michael D., and B. Gabriela Mundaca. 1989. “The Importance of Gifts and Inheritances among the Affluent.” *The Measurement of Saving, Investment, and Wealth Edited by University of Chicago Press*, 737–64. <https://doi.org/10.3386/w2415>.
- Hussein, Khaled, Mahmoud Mohieldin, and Ahmed Rostom. 2017. “Savings, Financial Development and Economic Growth in the Arab Republic of Egypt Revisited.” *Working Paper*, no. April.
- IMF. 2002. “Public Information Notice: IMF Concludes 2002 Article IV Consultation with The Gambia” 02/115.
- . 2017. “Request For Disbursement Under The Rapid Credit Facility, And Proposal For A Staff-Monitored Program—Press Release; Staff Report; And Statement By The Executive Director For The Gambia.”
- Jilani, Sidrat, Salman Ahmed Sheikh, Farooq E.Azam Cheema, and Ahsan ul Haq Shaik. 2013. “Determinants of National Savings in Pakistan: An Exploratory Study.” *Asian Social Science* 9 (5): 254–62. <https://doi.org/10.5539/ass.v9n5p254>.
- Juster, F. Thomas, and Paul Wachtel. 1972. *A Note on Inflation and the Savings Rate. Brookings Papers on Economic Activity. Washington*.
- Kelly, Roger, and George Mavrotas. 2008. “Savings and Financial Sector Development: Panel Cointegration Evidence from Africa.” *European Journal of Finance* 14 (7): 563–81. <https://doi.org/10.1080/13518470801890602>.
- Kwack, S. Y, and Y. S Lee. 2005. “What Determines Saving Rates in Korea?: The Role of Demography.” *Journal of Asian Economics* 16 (5): 861–73.
- Laursen, Svend, and Lloyd A Metzler. 1950. “Flexible Exchange Rates and the Theory of Employment.” *Review of Economics and Statistics* 32: 281–2.
- Lewis, W.A. 1954. “Economic Development with Unlimited Supplies of Labour.”

- The Manchester School* 22: 139–91.
- Loayza, N, and R Shankar. 2000. “Private Savings in India.” *The World Bank Economic Review* 14 (3): 571–94.
- Loayza, Norman, Klaus Schmidt-Hebbel, and Luis Serven. 2000. “Saving in Developing Countries : An Overview.” *The World Bank Economic Review* 14 (3): 393–414.
- Long, J Bradford De, and Lawrence H. Summers. 1991. “Equipment Investment and Economic Growth: How Strong Is the Nexus?” *Brookings Papers on Economic Activity*, 157–211.
- Mapalad, Maria Claret M. 1998. “Foreign Capital Inflows and Domestic Savings in The Philippines.” *Giordano Dell-Amore Foundation* 22 (1): 5–25.
- Marchante, A.J. 2001. “Regional Differences in Personal Savings Rates in Spain.” *Papers in Regional Science*.
- Maurice, Obstfeld. 2003. “Aggregate Spending and The Terms of Trade Is There Laursen Metzler Effect ?” *Quarterly Journal of Economics* 97 (No.2): 251–70.
- McPherson, Malcolm F., and Steven C. Radelet. 1992. *Economic Recovery in The Gambia: Lesson for Sub-Saharan Africa*.
- Menchik, Paul L, and Martin David. 1983. “Income Distribution , Lifetime Savings , and Bequests.” *American Economic Review* 73 (4): 672–90.
- MoTIE. 2011. “The Gambia Trade Policy 2011.” *Ministry of Trade, Regional Integration and Employment*, 0–36.
- Narayan, Paresh, and Saud AL Siyabi. 2005. “An Empirical Investigation of the Determinants of Oman’s National Savings.” *Economics Bulletin* 3 (51): 1–7.
- Nasstrom, Jens. 2003. “Volatility Modelling of Asset Prices Using GARCH Models.” *Thesis*.
- National Population Commission Secretariat. 2007. “National Population Policy 2007 - 2011.”
- Naudé, Willem. 1995. “Financial Liberalisation and Interest Rate Risk Management in Sub-Saharan Africa.” *Centre for the Study of African Economies Institute of Economics and Statistics University of Oxford*. <http://www.csae.ox.ac.uk/materials/papers/9612text.pdf>.
- Nelson, Charles, and Charles Plosser. 1982. “Trends and Random Walks in Macroeconomic Time Series: Some Evidence and Implications.” *Journal of Monetary Economics* 10 (2): 139–62.
- Niculescu-Aron, Ileana, and Constanta Mihaescu. 2014. “Modelling the Impact of Economic , Demographic and Social Determinants on Household Saving Rate in the Former Socialist Countries ( Central and Eastern Europe ).” *Procedia Economics and Finance* 10 (14): 104–13. [https://doi.org/10.1016/S2212-5671\(14\)00283-4](https://doi.org/10.1016/S2212-5671(14)00283-4).
- Nshimyumuremyi, Adalbert, Yannis Arvanitis, Khadidiatou Gassama, Radhika Lal, and Abdoulie Janneh. 2017. “Gambia Africa Economic Outlook.” <http://www.africaneconomicoutlook.org/en/country-notes/gambia>.
- Nurkse, Ragnar. 1966. *Problems of Capital Formation in Under-Developed Countries*. Edited by Basil Blackwell.
- NZIER. 2010. ““Save Now, Prosper Later: Increasing New Zealand’s Saving Rate – a Preliminary Dynamic CGE Analysis,’ NZIER Viewpoint.” *Working Paper*.

- Obstfeld, Maurice. 1982. "Aggregate Spending and the Terms of Trade.: Is There a Lausen- Metzler Effect ?" *The Quarterly Journal of Economics* 97 (2): 251–70.
- Osili, Una Okonkwo. 2007. "Remittances and Savings from International Migration: Theory and Evidence Using a Matched Sample." *Journal of Development Economics* 83 (2): 446–65. <https://doi.org/10.1016/j.jdeveco.2006.06.003>.
- Ozcan, Kivilcim Metin, Asli Gunay, and Seda Ertac. 2003. "Determinants of Private Savings Behaviour in Turkey." *Applied Economics* 35 (12): 1405–16. <https://doi.org/10.1080/0003684032000100373>.
- Pesaran, M. Hashem, Yongcheol Shin, and Richard J. Smith. 1999. "Bounds Testing Approach to Analysis of Long Run Relationships." *Cambridge Working Papers in Economics 9907, Faculty of Economics, University of Cambridge*.
- . 2001. "Bounds Testing Approaches to the Analysis of Level Relationships." *Journal of Applied Econometrics* 16 (3): 289–326. <https://doi.org/10.1002/jae.616>.
- Pollack, Robert A. 1998. *Notes on How Economists Think*. Chicago: Joint Center for Poverty Research.
- Prasad, Eswar, Kenneth Rogoff, Shang-Jin Wei, and M. Ayhan Kose. 2005. "Effects of Financial Globalization on Developing Countries: Some Empirical Evidence Kenneth RogoffShang-Jin WeiM. Ayhan Kose." *Palgrave Macmillan UK*, 201–28.
- Reinhart, Carmen, and Jonathan Ostry. 1995. "Saving and Real Interest Rates in Developing Countries." *Munich Personal RePEc Archive Saving* 32 (13352): 16–18. <http://mpra.ub.uni-muenchen.de/13352/>.
- Rodrik, Dani. 1998. "Saving Transitions." *Havard University John F. Kennedy School of Government*, no. July.
- Simon, Julian L. 2003. *The Art of Empirical Investigation*. Transaction Publishers.
- Sriram, Subramanian S. 2009. "The Gambia : Demand for Broad Money and Implications for Monetary Policy Conduct." *IMF Working Papers*.
- Svensson, L., and A. Razin. 1982. "The Terms of Trade and the Current Account: The Harberger–Laursen– Metzler Effect." *Journal of Political Economy* 91: 97–125.
- Tobin, J. 1967. "A Life Cycle Savings and Balanced Growth." In *Ten Economic Studies in the Tradition of Irving Fisher W. Fellner, et Al. (Eds)*, edited by W. Fellner, 231–56. New York.
- Tony, Mahmoud A. 2008. "Determinants of Domestic Saving Performance in Egypt : An Empirical Study." *Journal of Commercial Studies and Researches*, no. 1.
- UNDP. 2012. "Republic of The Gambia National Report 2012."
- Upgren, Arthur R. 1955. "Debt as a Lubricant." *Challenge* 4 (2): 59–62.
- Verreydt, Eric, Michael T. Hadjimichael, and Thomas Rumbaugh. 1992. "The Gambia; Economic Adjustment in a Small Open Economy." *IMF Occasional Papers*, September. <https://ideas.repec.org/p/imf/imfocp/100.html>.
- Vrijer, J.Erik De, Robin Kibuka, Buyang K Jang, Ivailo V Izvorski, and Christian H Beddies. 1999. "The Gambia Selected Issues." *IMF Staff Country Report No.99/71*.



- Wilson, Stuart J. 2000. "The Savings Rate Debate: Does the Dependency Hypothesis Hold for Australia and Canada?" *Australian Economic History Review* 40 (2): 199–218. <https://doi.org/10.1111/1467-8446.00065>.
- Young, Alwyn. 1995. "The Tyranny of Numbers: Confronting the Statistical Realities of The East Asian Growth Experience." *The Quarterly Journal of Economics*, no. august.

## Appendix

### Appendix 1 National saving ADF test constant and trend Level

Null Hypothesis: NS has a unit root

Exogenous: Constant, Linear Trend

Lag Length: 3 (Automatic - based on AIC, maxlag=3)

	t-Statistic	Prob.*
<b>Augmented Dickey-Fuller test statistic</b>	<b>-4.088843</b>	<b>0.0161</b>
Test critical values:		
1% level	-4.296729	
5% level	-3.568379	
10% level	-3.218382	

\*MacKinnon (1996) one-sided p-values.

Augmented Dickey-Fuller Test Equation

Dependent Variable: D(NS)

Method: Least Squares

Date: 07/14/18 Time: 22:33

Sample (adjusted): 1985 2014

Included observations: 30 after adjustments

Variable	Coefficient	Std. Error	t-Statistic	Prob.
NS(-1)	-1.143683	0.279708	-4.088843	0.0004
D(NS(-1))	0.308635	0.248940	1.239798	0.2270
D(NS(-2))	0.542044	0.221887	2.442886	0.0223
D(NS(-3))	0.444776	0.174411	2.550165	0.0176
C	25.61404	6.670522	3.839886	0.0008
@TREND("1981")	-0.597174	0.174080	-3.430465	0.0022
R-squared	0.542448	Mean dependent var		-0.307207
Adjusted R-squared	0.447124	S.D. dependent var		6.265587
S.E. of regression	4.658816	Akaike info criterion		6.092256
Sum squared resid	520.9097	Schwarz criterion		6.372496
Log likelihood	-85.38384	Hannan-Quinn criter.		6.181907
F-statistic	5.690600	Durbin-Watson stat		2.065388
Prob(F-statistic)	0.001342			

## Appendix 2 Real GDP Growth ADF test constant Level

Null Hypothesis: RGDP has a unit root

Exogenous: Constant

Lag Length: 1 (Automatic - based on AIC, maxlag=3)

	t-Statistic	Prob.*
<b>Augmented Dickey-Fuller test statistic</b>	<b>-9.471865</b>	<b>0.0000</b>
Test critical values:		
1% level	-3.653730	
5% level	-2.957110	
10% level	-2.617434	

\*MacKinnon (1996) one-sided p-values.

Augmented Dickey-Fuller Test Equation

Dependent Variable: D(RGDP)

Method: Least Squares

Date: 05/17/18 Time: 17:02

Sample (adjusted): 1983 2014

Included observations: 32 after adjustments

Variable	Coefficient	Std. Error	t-Statistic	Prob.
RGDP(-1)	-1.654702	0.174696	-9.471865	0.0000
D(RGDP(-1))	0.346384	0.111182	3.115459	0.0041
C	5.866344	0.874086	6.711400	0.0000
R-squared	0.780538	Mean dependent var		-0.295566
Adjusted R-squared	0.765403	S.D. dependent var		6.479603
S.E. of regression	3.138411	Akaike info criterion		5.214370
Sum squared resid	285.6391	Schwarz criterion		5.351783
Log likelihood	-80.42993	Hannan-Quinn criter.		5.259919
F-statistic	51.57069	Durbin-Watson stat		1.874816
Prob(F-statistic)	0.000000			

### Appendix 3 Debt ADF test constant & trend Level

Null Hypothesis: DEBT has a unit root

Exogenous: Constant, Linear Trend

Lag Length: 0 (Automatic - based on AIC, maxlag=3)

	t-Statistic	Prob.*
<b>Augmented Dickey-Fuller test statistic</b>	<b>-2.459611</b>	<b>0.3446</b>
Test critical values:		
1% level	-4.262735	
5% level	-3.552973	
10% level	-3.209642	

\*MacKinnon (1996) one-sided p-values.

Augmented Dickey-Fuller Test Equation

Dependent Variable: D(GDEBT)

Method: Least Squares

Date: 05/17/18 Time: 17:05

Sample (adjusted): 1982 2014

Included observations: 33 after adjustments

Variable	Coefficient	Std. Error	t-Statistic	Prob.
DEBT(-1)	-0.341713	0.138930	-2.459611	0.0199
C	43.06912	18.23400	2.362023	0.0249
@TREND("1981")	-0.794215	0.427480	-1.857902	0.0730
R-squared	0.175878	Mean dependent var		-2.003755
Adjusted R-squared	0.120937	S.D. dependent var		20.75553
S.E. of regression	19.46005	Akaike info criterion		8.861113
Sum squared resid	11360.81	Schwarz criterion		8.997159
Log likelihood	-143.2084	Hannan-Quinn criter.		8.906888
F-statistic	3.201190	Durbin-Watson stat		2.218484
Prob(F-statistic)	0.054938			

### Appendix 4 Debt ADF test constant and trend 1<sup>st</sup> Difference

Null Hypothesis: D(DEBT) has a unit root

Exogenous: Constant, Linear Trend

Lag Length: 0 (Automatic - based on AIC, maxlag=3)

	t-Statistic	Prob.*
<b>Augmented Dickey-Fuller test statistic</b>	<b>-7.470163</b>	<b>0.0000</b>
Test critical values:		
1% level	-4.273277	
5% level	-3.557759	
10% level	-3.212361	

\*MacKinnon (1996) one-sided p-values.

Augmented Dickey-Fuller Test Equation

Dependent Variable: D(DEBT,2)

Method: Least Squares

Date: 05/17/18 Time: 17:08

Sample (adjusted): 1983 2014

Included observations: 32 after adjustments

Variable	Coefficient	Std. Error	t-Statistic	Prob.
D(DEBT(-1))	-1.315026	0.176037	-7.470163	0.0000
C	1.478052	7.798529	0.189530	0.8510
@TREND("1981")	-0.248972	0.395649	-0.629276	0.5341
R-squared	0.658070	Mean dependent var		-0.336031
Adjusted R-squared	0.634488	S.D. dependent var		34.01928
S.E. of regression	20.56723	Akaike info criterion		8.974335
Sum squared resid	12267.32	Schwarz criterion		9.111748
Log likelihood	-140.5894	Hannan-Quinn criter.		9.019883
F-statistic	27.90631	Durbin-Watson stat		1.871414
Prob(F-statistic)	0.000000			

### Appendix 5 Inflation ADF constant and trend Level

Null Hypothesis: INF has a unit root

Exogenous: Constant, Linear Trend

Lag Length: 0 (Automatic - based on AIC, maxlag=3)

	t-Statistic	Prob.*
<b>Augmented Dickey-Fuller test statistic</b>	<b>-3.728988</b>	<b>0.0342</b>
Test critical values:		
1% level	-4.262735	
5% level	-3.552973	
10% level	-3.209642	

\*MacKinnon (1996) one-sided p-values.

Augmented Dickey-Fuller Test Equation

Dependent Variable: D(INF)

Method: Least Squares

Date: 05/17/18 Time: 17:10

Sample (adjusted): 1982 2014

Included observations: 33 after adjustments

Variable	Coefficient	Std. Error	t-Statistic	Prob.
INF(-1)	-0.612405	0.164228	-3.728988	0.0008
C	11.21109	4.157775	2.696415	0.0114
@TREND("1981")	-0.323144	0.173879	-1.858439	0.0729
R-squared	0.317628	Mean dependent var		3.47E-16
Adjusted R-squared	0.272136	S.D. dependent var		10.01146
S.E. of regression	8.541273	Akaike info criterion		7.214205
Sum squared resid	2188.600	Schwarz criterion		7.350251
Log likelihood	-116.0344	Hannan-Quinn criter.		7.259980
F-statistic	6.982134	Durbin-Watson stat		2.049547
Prob(F-statistic)	0.003238			

### Appendix 6 Real Interest rate ADF Test constant & trend Level

Null Hypothesis: INTR has a unit root

Exogenous: Constant

Lag Length: 0 (Automatic - based on AIC, maxlag=3)

	t-Statistic	Prob.*
<b>Augmented Dickey-Fuller test statistic</b>	<b>-4.373107</b>	<b>0.0015</b>
Test critical values:		
1% level	-3.646342	
5% level	-2.954021	
10% level	-2.615817	

\*MacKinnon (1996) one-sided p-values.

Augmented Dickey-Fuller Test Equation

Dependent Variable: D(INTR)

Method: Least Squares

Date: 05/17/18 Time: 17:15

Sample (adjusted): 1982 2014

Included observations: 33 after adjustments

Variable	Coefficient	Std. Error	t-Statistic	Prob.
INTR(-1)	-0.763935	0.174689	-4.373107	0.0001
C	11.68321	3.697755	3.159541	0.0035
R-squared	0.381535	Mean dependent var		0.081818
Adjusted R-squared	0.361584	S.D. dependent var		18.52010
S.E. of regression	14.79773	Akaike info criterion		8.285517
Sum squared resid	6788.161	Schwarz criterion		8.376214
Log likelihood	-134.7110	Hannan-Quinn criter.		8.316034
F-statistic	19.12407	Durbin-Watson stat		2.038322
Prob(F-statistic)	0.000128			

### Appendix 7 Financial Development ADF Test constant & trend Level

Null Hypothesis: FD has a unit root

Exogenous: Constant, Linear Trend

Lag Length: 0 (Automatic - based on AIC, maxlag=3)

	t-Statistic	Prob.*
<b>Augmented Dickey-Fuller test statistic</b>	<b>-1.054358</b>	<b>0.9218</b>
Test critical values:		
1% level	-4.262735	
5% level	-3.552973	
10% level	-3.209642	

\*MacKinnon (1996) one-sided p-values.

Augmented Dickey-Fuller Test Equation

Dependent Variable: D(FD)

Method: Least Squares

Date: 05/17/18 Time: 17:23

Sample (adjusted): 1982 2014

Included observations: 33 after adjustments

Variable	Coefficient	Std. Error	t-Statistic	Prob.
FD(-1)	-0.058189	0.055189	-1.054358	0.3001
C	-0.734019	1.301277	-0.564076	0.5769
@TREND("1981")	0.192938	0.078601	2.454643	0.0201
R-squared	0.181603	Mean dependent var		0.934903
Adjusted R-squared	0.127043	S.D. dependent var		3.416369
S.E. of regression	3.191988	Akaike info criterion		5.245673
Sum squared resid	305.6636	Schwarz criterion		5.381719
Log likelihood	-83.55360	Hannan-Quinn criter.		5.291448
F-statistic	3.328507	Durbin-Watson stat		2.220289
Prob(F-statistic)	0.049484			

### Appendix 8 Financial Development ADF Test constant & trend 1<sup>st</sup> Difference

Null Hypothesis: D(FD) has a unit root

Exogenous: Constant, Linear Trend

Lag Length: 0 (Automatic - based on AIC, maxlag=3)

	t-Statistic	Prob.*
<b>Augmented Dickey-Fuller test statistic</b>	<b>-6.248361</b>	<b>0.0001</b>
Test critical values:		
1% level	-4.273277	
5% level	-3.557759	
10% level	-3.212361	

\*MacKinnon (1996) one-sided p-values.

Augmented Dickey-Fuller Test Equation

Dependent Variable: D(FD,2)

Method: Least Squares

Date: 05/17/18 Time: 17:28

Sample (adjusted): 1983 2014

Included observations: 32 after adjustments

Variable	Coefficient	Std. Error	t-Statistic	Prob.
D(FD(-1))	-1.152442	0.184439	-6.248361	0.0000
C	-1.903746	1.271255	-1.497533	0.1451
@TREND("1981")	0.171198	0.068241	2.508727	0.0180
R-squared	0.573817	Mean dependent var		0.007556
Adjusted R-squared	0.544425	S.D. dependent var		4.814896
S.E. of regression	3.249875	Akaike info criterion		5.284170
Sum squared resid	306.2889	Schwarz criterion		5.421583
Log likelihood	-81.54672	Hannan-Quinn criter.		5.329718
F-statistic	19.52297	Durbin-Watson stat		1.958898
Prob(F-statistic)	0.000004			

### Appendix 9 Foreign Aid ADF constant and trend level

Null Hypothesis: FAID has a unit root  
Exogenous: Constant, Linear Trend  
Lag Length: 3 (Automatic - based on AIC, maxlag=3)

	t-Statistic	Prob.*
<b>Augmented Dickey-Fuller test statistic</b>	<b>-2.158163</b>	<b>0.4944</b>
Test critical values:		
1% level	-4.296729	
5% level	-3.568379	
10% level	-3.218382	

\*MacKinnon (1996) one-sided p-values.

Augmented Dickey-Fuller Test Equation  
Dependent Variable: D(FAID)  
Method: Least Squares  
Date: 07/14/18 Time: 22:58  
Sample (adjusted): 1985 2014  
Included observations: 30 after adjustments

Variable	Coefficient	Std. Error	t-Statistic	Prob.
FAID(-1)	-0.339159	0.157152	-2.158163	0.0411
D(FAID(-1))	-0.059888	0.205593	-0.291295	0.7733
D(FAID(-2))	0.174198	0.202042	0.862189	0.3971
D(FAID(-3))	0.425045	0.180232	2.358317	0.0268
C	9.216750	5.622399	1.639291	0.1142
@TREND("1981")	-0.221055	0.184738	-1.196588	0.2432
R-squared	0.335272	Mean dependent var		-0.553937
Adjusted R-squared	0.196787	S.D. dependent var		7.296029
S.E. of regression	6.538858	Akaike info criterion		6.770259
Sum squared resid	1026.160	Schwarz criterion		7.050498
Log likelihood	-95.55388	Hannan-Quinn criter.		6.859910
F-statistic	2.421000	Durbin-Watson stat		2.057982
Prob(F-statistic)	0.065186			

### Appendix 10 Foreign Aid ADF constant and trend level 1<sup>st</sup> Difference

Null Hypothesis: D(FAID) has a unit root  
Exogenous: Constant, Linear Trend  
Lag Length: 0 (Automatic - based on AIC, maxlag=3)

	t-Statistic	Prob.*
<b>Augmented Dickey-Fuller test statistic</b>	<b>-7.497919</b>	<b>0.0000</b>
Test critical values:		
1% level	-4.273277	
5% level	-3.557759	
10% level	-3.212361	

\*MacKinnon (1996) one-sided p-values.

Augmented Dickey-Fuller Test Equation  
Dependent Variable: D(FAID,2)  
Method: Least Squares  
Date: 07/14/18 Time: 23:00  
Sample (adjusted): 1983 2014  
Included observations: 32 after adjustments

Variable	Coefficient	Std. Error	t-Statistic	Prob.
D(FAID(-1))	-1.298941	0.173240	-7.497919	0.0000
C	-1.010523	2.720564	-0.371439	0.7130
@TREND("1981")	0.030705	0.137140	0.223892	0.8244
R-squared	0.660278	Mean dependent var		0.278574
Adjusted R-squared	0.636848	S.D. dependent var		11.84761
S.E. of regression	7.139610	Akaike info criterion		6.858253
Sum squared resid	1478.247	Schwarz criterion		6.995666
Log likelihood	-106.7321	Hannan-Quinn criter.		6.903802
F-statistic	28.18191	Durbin-Watson stat		2.133178
Prob(F-statistic)	0.000000			

### Appendix 11 Remittances ADF test constant and trend level

Null Hypothesis: REMIT has a unit root

Exogenous: Constant, Linear Trend

Lag Length: 0 (Automatic - based on AIC, maxlag=3)

	t-Statistic	Prob.*
<b>Augmented Dickey-Fuller test statistic</b>	<b>-1.066577</b>	<b>0.9197</b>
Test critical values:		
1% level	-4.262735	
5% level	-3.552973	
10% level	-3.209642	

\*MacKinnon (1996) one-sided p-values.

Augmented Dickey-Fuller Test Equation

Dependent Variable: D(REMIT)

Method: Least Squares

Date: 05/17/18 Time: 17:40

Sample (adjusted): 1982 2014

Included observations: 33 after adjustments

Variable	Coefficient	Std. Error	t-Statistic	Prob.
REMIT(-1)	-0.122180	0.114553	-1.066577	0.2947
C	-1.058687	0.899072	-1.177533	0.2482
@TREND("1981")	0.128228	0.066596	1.925454	0.0637
R-squared	0.126793	Mean dependent var		0.640909
Adjusted R-squared	0.068579	S.D. dependent var		2.248722
S.E. of regression	2.170245	Akaike info criterion		4.474065
Sum squared resid	141.2989	Schwarz criterion		4.610111
Log likelihood	-70.82208	Hannan-Quinn criter.		4.519841
F-statistic	2.178059	Durbin-Watson stat		1.926927
Prob(F-statistic)	0.130845			

### Appendix 12 Remittances ADF test constant and trend 1<sup>st</sup> Difference

Null Hypothesis: D(REMIT) has a unit root

Exogenous: Constant, Linear Trend

Lag Length: 0 (Automatic - based on AIC, maxlag=3)

	t-Statistic	Prob.*
<b>Augmented Dickey-Fuller test statistic</b>	<b>-5.660508</b>	<b>0.0003</b>
Test critical values:		
1% level	-4.273277	
5% level	-3.557759	
10% level	-3.212361	

\*MacKinnon (1996) one-sided p-values.

Augmented Dickey-Fuller Test Equation

Dependent Variable: D(REMIT,2)

Method: Least Squares

Date: 05/17/18 Time: 17:41

Sample (adjusted): 1983 2014

Included observations: 32 after adjustments

Variable	Coefficient	Std. Error	t-Statistic	Prob.
D(REMIT(-1))	-1.049941	0.185485	-5.660508	0.0000
C	-0.665737	0.859383	-0.774668	0.4448
@TREND("1981")	0.077653	0.045114	1.721239	0.0959
R-squared	0.524912	Mean dependent var		0.041563
Adjusted R-squared	0.492148	S.D. dependent var		3.149125
S.E. of regression	2.244185	Akaike info criterion		4.543622
Sum squared resid	146.0546	Schwarz criterion		4.681034
Log likelihood	-69.69795	Hannan-Quinn criter.		4.589170
F-statistic	16.02068	Durbin-Watson stat		2.015614
Prob(F-statistic)	0.000021			

### Appendix 13 Trade ADF Test constant and trend Level

Null Hypothesis: TRAD has a unit root

Exogenous: Constant, Linear Trend

Lag Length: 0 (Automatic - based on AIC, maxlag=3)

	t-Statistic	Prob.*
<b>Augmented Dickey-Fuller test statistic</b>	<b>-2.772981</b>	<b>0.2165</b>
Test critical values:		
1% level	-4.262735	
5% level	-3.552973	
10% level	-3.209642	

\*MacKinnon (1996) one-sided p-values.

Augmented Dickey-Fuller Test Equation

Dependent Variable: D(TRAD)

Method: Least Squares

Date: 05/17/18 Time: 17:43

Sample (adjusted): 1982 2014

Included observations: 33 after adjustments

Variable	Coefficient	Std. Error	t-Statistic	Prob.
TRAD(-1)	-0.393014	0.141730	-2.772981	0.0095
C	48.89067	17.95615	2.722782	0.0107
@TREND("1981")	-0.790556	0.331686	-2.383443	0.0237
R-squared	0.210194	Mean dependent var	-1.454435	
Adjusted R-squared	0.157540	S.D. dependent var	13.62174	
S.E. of regression	12.50280	Akaike info criterion	7.976291	
Sum squared resid	4689.602	Schwarz criterion	8.112337	
Log likelihood	-128.6088	Hannan-Quinn criter.	8.022066	
F-statistic	3.992002	Durbin-Watson stat	2.230299	
Prob(F-statistic)	0.029027			

### Appendix 14 Trade ADF Test constant and trend 1<sup>st</sup> Difference

Null Hypothesis: D(TRAD) has a unit root

Exogenous: Constant, Linear Trend

Lag Length: 0 (Automatic - based on AIC, maxlag=3)

	t-Statistic	Prob.*
<b>Augmented Dickey-Fuller test statistic</b>	<b>-7.828085</b>	<b>0.0000</b>
Test critical values:		
1% level	-4.273277	
5% level	-3.557759	
10% level	-3.212361	

\*MacKinnon (1996) one-sided p-values.

Augmented Dickey-Fuller Test Equation

Dependent Variable: D(TRAD,2)

Method: Least Squares

Date: 05/17/18 Time: 17:52

Sample (adjusted): 1983 2014

Included observations: 32 after adjustments

Variable	Coefficient	Std. Error	t-Statistic	Prob.
D(TRAD(-1))	-1.347693	0.172161	-7.828085	0.0000
C	2.294815	5.001577	0.458818	0.6498
@TREND("1981")	-0.224425	0.253370	-0.885761	0.3830
R-squared	0.679169	Mean dependent var	0.103830	
Adjusted R-squared	0.657043	S.D. dependent var	22.54088	
S.E. of regression	13.20051	Akaike info criterion	8.087449	
Sum squared resid	5053.353	Schwarz criterion	8.224861	
Log likelihood	-126.3992	Hannan-Quinn criter.	8.132997	
F-statistic	30.69515	Durbin-Watson stat	2.186526	
Prob(F-statistic)	0.000000			

### Appendix 15 Dependency ratio ADF Test constant and trend Level

Null Hypothesis: DEPENDCY\_RATIO has a unit root

Exogenous: Constant, Linear Trend

Lag Length: 1 (Automatic - based on AIC, maxlag=3)

	t-Statistic	Prob.*
<b>Augmented Dickey-Fuller test statistic</b>	<b>-2.037048</b>	<b>0.5596</b>
Test critical values:		
1% level	-4.273277	
5% level	-3.557759	
10% level	-3.212361	

\*MacKinnon (1996) one-sided p-values.

Augmented Dickey-Fuller Test Equation  
Dependent Variable: D(DEPENDCY\_RATIO)  
Method: Least Squares  
Date: 05/17/18 Time: 17:57  
Sample (adjusted): 1983 2014  
Included observations: 32 after adjustments

Variable	Coefficient	Std. Error	t-Statistic	Prob.
DEPENDCY_RATIO(-1)	-0.222537	0.109245	-2.037048	0.0512
D(DEPENDCY_RATIO(-1... C	0.380197	0.157188	2.418746	0.0223
	21.79166	10.65918	2.044402	0.0504
@TREND("1981")	-0.026555	0.012023	-2.208689	0.0356
R-squared	0.307571	Mean dependent var		-0.101657
Adjusted R-squared	0.233383	S.D. dependent var		0.487854
S.E. of regression	0.427149	Akaike info criterion		1.253101
Sum squared resid	5.108776	Schwarz criterion		1.436318
Log likelihood	-16.04962	Hannan-Quinn criter.		1.313832
F-statistic	4.145796	Durbin-Watson stat		1.785313
Prob(F-statistic)	0.014987			

### Appendix 16 Dependency ratio ADF Test constant and trend 1<sup>st</sup> Difference

Null Hypothesis: D(DEPENDCY\_RATIO) has a unit root

Exogenous: Constant, Linear Trend

Lag Length: 0 (Automatic - based on AIC, maxlag=3)

	t-Statistic	Prob.*
<b>Augmented Dickey-Fuller test statistic</b>	<b>-4.163754</b>	<b>0.0130</b>
Test critical values:		
1% level	-4.273277	
5% level	-3.557759	
10% level	-3.212361	

\*MacKinnon (1996) one-sided p-values.

Augmented Dickey-Fuller Test Equation  
Dependent Variable: D(DEPENDCY\_RATIO,2)  
Method: Least Squares  
Date: 05/17/18 Time: 17:58  
Sample (adjusted): 1983 2014  
Included observations: 32 after adjustments

Variable	Coefficient	Std. Error	t-Statistic	Prob.
D(DEPENDCY_RATIO(-1... C	-0.677740	0.162771	-4.163754	0.0003
	0.081114	0.177908	0.455930	0.6518
@TREND("1981")	-0.009757	0.009212	-1.059123	0.2983
R-squared	0.376870	Mean dependent var		-0.064338
Adjusted R-squared	0.333896	S.D. dependent var		0.551058
S.E. of regression	0.449747	Akaike info criterion		1.328795
Sum squared resid	5.865891	Schwarz criterion		1.466208
Log likelihood	-18.26073	Hannan-Quinn criter.		1.374344
F-statistic	8.769635	Durbin-Watson stat		1.838951
Prob(F-statistic)	0.001050			

### Appendix 17 Estimates of the Short run and Bound test of the ARDL Model

ARDL Error Correction Regression

Dependent Variable: D(NS)

Selected Model: ARDL(2, 2, 1, 2, 2, 2, 1, 1, 0, 1)

Case 2: Restricted Constant and No Trend

Date: 07/12/18 Time: 13:12

Sample: 1981 2014

Included observations: 32

ECM Regression				
Case 2: Restricted Constant and No Trend				
Variable	Coefficient	Std. Error	t-Statistic	Prob.
D(NS(-1))	-0.271331	0.059400	-4.567852	0.0018
D(RGDP)	0.381992	0.058401	6.540889	0.0002
D(RGDP(-1))	-0.621807	0.064545	-9.633728	0.0000
D(GDEBT)	0.383377	0.027077	14.15886	0.0000
D(INF)	-0.818952	0.079304	-10.32678	0.0000
D(INF(-1))	0.461671	0.046560	9.915572	0.0000
D(INTR)	-0.141492	0.031075	-4.553178	0.0019
D(INTR(-1))	0.179934	0.025189	7.143389	0.0001
D(FD)	-0.701255	0.108044	-6.490455	0.0002
D(FD(-1))	0.405075	0.126735	3.196221	0.0127
D(FAID)	0.161736	0.084831	1.906571	0.0930
D(REMIT)	-0.028257	0.160344	-0.176228	0.8645
D(DEPENDCY RATIO)	3.261534	0.698168	4.671562	0.0016
CointEq(-1)*	-0.737010	0.046689	-15.78552	0.0000
R-squared	0.956271	Mean dependent var	-0.473765	
Adjusted R-squared	0.924688	S.D. dependent var	6.108124	
S.E. of regression	1.676251	Akaike info criterion	4.170633	
Sum squared resid	50.57673	Schwarz criterion	4.811892	
Log likelihood	-52.73012	Hannan-Quinn criter.	4.383192	
Durbin-Watson stat	1.979703			

\* p-value incompatible with t-Bounds distribution.

F-Bounds Test		Null Hypothesis: No levels relationship		
Test Statistic	Value	Signif.	I(0)	I(1)
F-statistic	10.06798	10%	1.8	2.8
k	9	5%	2.04	2.08
		2.5%	2.24	3.35
		1%	2.5	3.68

## Appendix 18 Estimates of the Long run ARDL Model

ARDL Long Run Form and Bounds Test

Dependent Variable: D(NS)

Selected Model: ARDL(2, 2, 1, 2, 2, 2, 1, 1, 0, 1)

Case 2: Restricted Constant and No Trend

Date: 07/14/18 Time: 23:37

Sample: 1981 2014

Included observations: 32

Conditional Error Correction Regression				
Variable	Coefficient	Std. Error	t-Statistic	Prob.
C	-1130.029	167.1266	-6.761513	0.0001
NS(-1)*	-0.737010	0.212627	-3.466210	0.0085
RGDP(-1)	1.308539	0.482270	2.713290	0.0265
GDEBT(-1)	0.449249	0.082572	5.440726	0.0006
INF(-1)	-2.074133	0.534984	-3.876996	0.0047
INTR(-1)	-0.757095	0.264425	-2.863176	0.0210
FD(-1)	0.347625	0.273853	1.269386	0.2400
FAID(-1)	1.049437	0.314051	3.341610	0.0102
REMIT(-1)	1.730242	0.452157	3.826641	0.0050
TRAD**	-0.264336	0.145317	-1.819031	0.1064
DEPENDCY_RATIO(-1)	11.59566	1.776403	6.527608	0.0002
D(NS(-1))	-0.271331	0.138406	-1.960401	0.0856
D(RGDP)	0.381992	0.228860	1.669105	0.1336
D(RGDP(-1))	-0.621807	0.138904	-4.476517	0.0021
D(GDEBT)	0.383377	0.088169	4.348224	0.0025
D(INF)	-0.818952	0.276062	-2.966555	0.0180
D(INF(-1))	0.461671	0.152286	3.031615	0.0163
D(INTR)	-0.141492	0.089492	-1.581057	0.1525
D(INTR(-1))	0.179934	0.090540	1.987342	0.0821
D(FD)	-0.701255	0.379187	-1.849365	0.1016
D(FD(-1))	0.405075	0.409737	0.988621	0.3518
D(FAID)	0.161736	0.183471	0.881535	0.4037
D(REMIT)	-0.028257	0.317313	-0.089051	0.9312
D(DEPENDCY_RATIO)	3.261534	2.059885	1.583357	0.1520

\* p-value incompatible with t-Bounds distribution.

\*\* Variable interpreted as  $Z = Z(-1) + D(Z)$ .

Levels Equation Case 2: Restricted Constant and No Trend				
Variable	Coefficient	Std. Error	t-Statistic	Prob.
RGDP	1.775470	0.806260	2.202106	0.0588
GDEBT	0.609557	0.224887	2.710505	0.0266
INF	-2.814254	1.313399	-2.142726	0.0645
INTR	-1.027253	0.564895	-1.818485	0.1065
FD	0.471669	0.363885	1.296202	0.2310
FAID	1.423912	0.707804	2.011733	0.0791
REMIT	2.347652	1.068101	2.197968	0.0592
TRAD	-0.358660	0.274934	-1.304529	0.2283
DEPENDCY_RATIO	15.73339	5.476722	2.872775	0.0207
C	-1533.262	521.1376	-2.942143	0.0186

EC = NS - (1.7755\*RGDP + 0.6096\*GDEBT - 2.8143\*INF - 1.0273\*INTR + 0.4717\*FD + 1.4239\*FAID + 2.3477\*REMIT - 0.3587\*TRAD + 15.7334 \*DEPENDCY\_RATIO -1533.2617 )

F-Bounds Test				
Null Hypothesis: No levels relationship				
Test Statistic	Value	Signif.	I(0)	I(1)
F-statistic k	10.06798 9	10%	1.8	2.8
		5%	2.04	2.08
		2.5%	2.24	3.35
		1%	2.5	3.68
Actual Sample Size	32	Finite Sample: n=35		
		10%	-1	-1
		5%	-1	-1
		1%	-1	-1
			Finite Sample: n=30	
		10%	-1	-1
		5%	-1	-1
		1%	-1	-1

## Appendix 19 Breusch Godfrey for Serial Correlation LM test

Breusch-Godfrey Serial Correlation LM Test:

F-statistic	0.000273	Prob. F(1,7)	0.9873
Obs*R-squared	0.001247	Prob. Chi-Square(1)	0.9718

Test Equation:

Dependent Variable: RESID

Method: ARDL

Date: 05/16/18 Time: 13:03

Sample: 1983 2014

Included observations: 32

Presample missing value lagged residuals set to zero.

Variable	Coefficient	Std. Error	t-Statistic	Prob.
NS(-1)	-0.000759	0.217529	-0.003491	0.9973
NS(-2)	0.000147	0.148228	0.000994	0.9992
RGDP	0.001819	0.268313	0.006781	0.9948
RGDP(-1)	0.001114	0.228157	0.004884	0.9962
RGDP(-2)	0.001269	0.167207	0.007592	0.9942
GDEBT	0.000715	0.103726	0.006895	0.9947
GDEBT(-1)	6.34E-05	0.075561	0.000838	0.9994
INF	-0.000823	0.299295	-0.002750	0.9979
INF(-1)	-0.001310	0.212044	-0.006176	0.9952
INF(-2)	-0.000655	0.167561	-0.003910	0.9970
INTR	-0.000270	0.097058	-0.002784	0.9979
INTR(-1)	-0.000294	0.147536	-0.001991	0.9985
INTR(-2)	-0.000387	0.099586	-0.003886	0.9970
FD	-0.001460	0.414884	-0.003518	0.9973
FD(-1)	0.001288	0.579785	0.002222	0.9983
FD(-2)	0.001555	0.448027	0.003472	0.9973
FAID	0.000128	0.196288	0.000653	0.9995
FAID(-1)	0.000796	0.264511	0.003010	0.9977
REMIT	0.000185	0.339401	0.000545	0.9996
REMIT(-1)	0.000852	0.537948	0.001583	0.9988
TRAD	-0.000236	0.156001	-0.001511	0.9988
DEPENDCY RATIO	-0.004165	2.216458	-0.001879	0.9986
DEPENDCY RATIO(-1...	0.015624	2.657563	0.005879	0.9955
C	-1.172897	192.2590	-0.006101	0.9953
RESID(-1)	0.009222	0.558362	0.016516	0.9873

R-squared	0.000039	Mean dependent var	-7.82E-14
Adjusted R-squared	-3.428399	S.D. dependent var	1.277305
S.E. of regression	2.687930	Akaike info criterion	4.858094
Sum squared resid	50.57476	Schwarz criterion	6.003200
Log likelihood	-52.72950	Hannan-Quinn criter.	5.237664
F-statistic	1.14E-05	Durbin-Watson stat	1.983804
Prob(F-statistic)	1.000000		

## Appendix 20 Breusch Pagan Godfrey for Heteroskedasticity Test

Heteroskedasticity Test: Breusch-Pagan-Godfrey

F-statistic	1.124092	Prob. F(23,8)	0.4596
Obs*R-squared	24.43814	Prob. Chi-Square(23)	0.3799
Scaled explained SS	2.268788	Prob. Chi-Square(23)	1.0000

Test Equation:

Dependent Variable: RESID^2

Method: Least Squares

Date: 05/16/18 Time: 13:07

Sample: 1983 2014

Included observations: 32

Variable	Coefficient	Std. Error	t-Statistic	Prob.
C	-361.0591	176.0448	-2.050950	0.0744
NS(-1)	-0.355143	0.209499	-1.695208	0.1285
NS(-2)	0.213740	0.145791	1.466067	0.1808
RGDP	-0.129832	0.241073	-0.538558	0.6048
RGDP(-1)	-0.128863	0.214759	-0.600036	0.5651
RGDP(-2)	0.144207	0.146316	0.985587	0.3532
GDEBT	0.048677	0.092873	0.524123	0.6144
GDEBT(-1)	0.134668	0.074358	1.811073	0.1077
INF	-0.119949	0.290793	-0.412489	0.6908
INF(-1)	-0.355174	0.193779	-1.832880	0.1042
INF(-2)	-0.073809	0.160412	-0.460125	0.6577
INTR	0.050670	0.094267	0.537516	0.6055
INTR(-1)	0.038210	0.144315	0.264768	0.7979
INTR(-2)	-0.070137	0.095371	-0.735410	0.4831
FD	-0.597875	0.399421	-1.496856	0.1728
FD(-1)	-0.082822	0.566098	-0.146303	0.8873
FD(-2)	1.204285	0.431601	2.790274	0.0235
FAID	-0.066762	0.193261	-0.345449	0.7387
FAID(-1)	0.051940	0.256271	0.202674	0.8444
REMIT	0.469167	0.334246	1.403658	0.1980
REMIT(-1)	-0.612869	0.527626	-1.161560	0.2789
TRAD	-0.049456	0.153071	-0.323093	0.7549
DEPENDCY RATIO	0.155393	2.169804	0.071616	0.9447
DEPENDCY RATIO(-1)	3.429801	2.447104	1.401576	0.1986

R-squared	0.763692	Mean dependent var	1.580523
Adjusted R-squared	0.084307	S.D. dependent var	2.767788
S.E. of regression	2.648548	Akaike info criterion	4.899606
Sum squared resid	56.11845	Schwarz criterion	5.998908
Log likelihood	-54.39369	Hannan-Quinn criter.	5.263993
F-statistic	1.124092	Durbin-Watson stat	2.030876
Prob(F-statistic)	0.459606		

## Appendix 21 Ramsey Test for Model Misspecification

Ramsey RESET Test

Equation: UNTITLED

Specification: NS NS(-1) NS(-2) RGDP RGDP(-1) RGDP(-2) GDEBT  
GDEBT(-1) INF INF(-1) INF(-2) INTR INTR(-1) INTR(-2) FD FD(-1) FD(-2)  
FAID FAID(-1) REMIT REMIT(-1) TRAD DEPENDCY RATIO  
DEPENDCY RATIO(-1) C

Omitted Variables: Squares of fitted values

	Value	df	Probability
t-statistic	0.972517	7	0.3632
F-statistic	0.945789	(1, 7)	0.3632

F-test summary:

	Sum of Sq.	df	Mean Squares
Test SSR	6.020162	1	6.020162
Restricted SSR	50.57673	8	6.322091
Unrestricted SSR	44.55657	7	6.365224

Unrestricted Test Equation:

Dependent Variable: NS

Method: ARDL

Date: 05/16/18 Time: 13:18

Sample: 1983 2014

Included observations: 32

Maximum dependent lags: 2 (Automatic selection)

Model selection method: Akaike info criterion (AIC)

Dynamic regressors (2 lags, automatic):

Fixed regressors: C

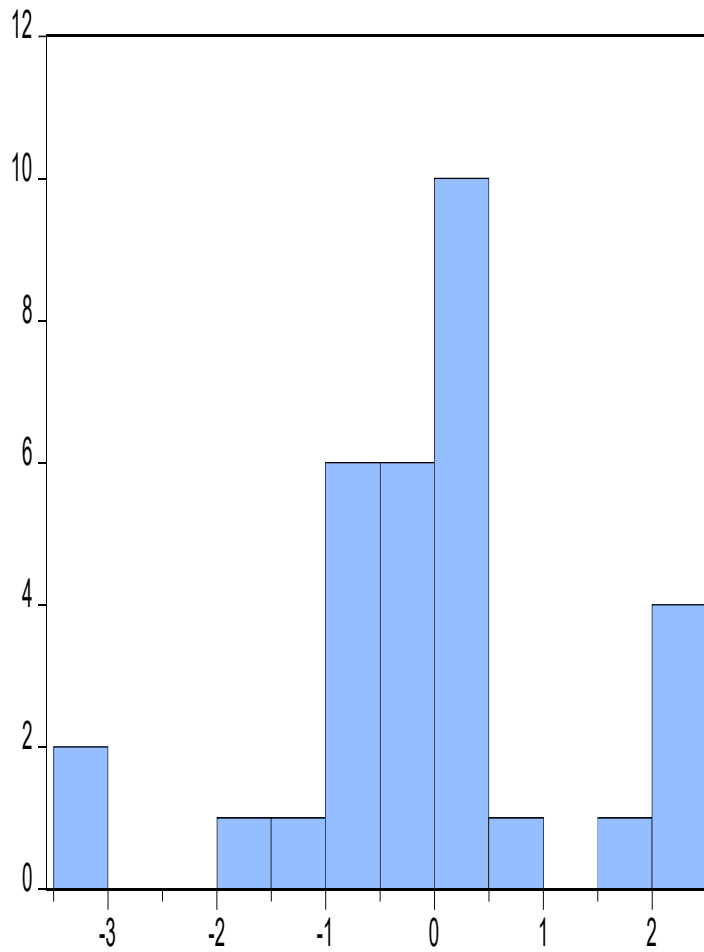
Variable	Coefficient	Std. Error	t-Statistic	Prob.*
NS(-1)	-0.016039	0.199720	-0.080308	0.9382
NS(-2)	0.437668	0.220320	1.986514	0.0873
RGDP	0.616745	0.333170	1.851143	0.1066
RGDP(-1)	0.467362	0.264220	1.768834	0.1202
RGDP(-2)	1.037857	0.449939	2.306660	0.0545
GDEBT	0.609628	0.248898	2.449306	0.0442
GDEBT(-1)	0.102456	0.080201	1.277487	0.2422
INF	-1.377302	0.637459	-2.160613	0.0675
INF(-1)	-1.302204	0.554685	-2.347647	0.0513
INF(-2)	-0.747854	0.331578	-2.255440	0.0587
INTR	-0.259931	0.151312	-1.717848	0.1295
INTR(-1)	-0.739987	0.341783	-2.165081	0.0671
INTR(-2)	-0.310482	0.162090	-1.915493	0.0970
FD	-1.074690	0.540565	-1.988086	0.0871
FD(-1)	2.254435	0.984017	2.291054	0.0557
FD(-2)	-0.684889	0.501810	-1.364836	0.2146
FAID	0.276428	0.218631	1.264360	0.2466
FAID(-1)	1.455955	0.633256	2.299156	0.0551
REMIT	0.025719	0.323195	0.079577	0.9388
REMIT(-1)	2.716164	1.105576	2.456786	0.0437
TRAD	-0.484962	0.269679	-1.798292	0.1152
DEPENDCY_RATIO	4.721534	2.554575	1.848266	0.1070
DEPENDCY_RATIO(-1)	13.96986	6.246257	2.236517	0.0604
C	-1814.434	723.4502	-2.508028	0.0405
FITTED^2	-0.024431	0.025121	-0.972517	0.3632

R-squared	0.970431	Mean dependent var	12.52984
Adjusted R-squared	0.869052	S.D. dependent var	6.971992
S.E. of regression	2.522940	Akaike info criterion	4.731401
Sum squared resid	44.55657	Schwarz criterion	5.876507
Log likelihood	-50.70241	Hannan-Quinn criter.	5.110971
F-statistic	9.572276	Durbin-Watson stat	2.138503
Prob(F-statistic)	0.002486		

\*Note: p-values and any subsequent tests do not account for model selection.

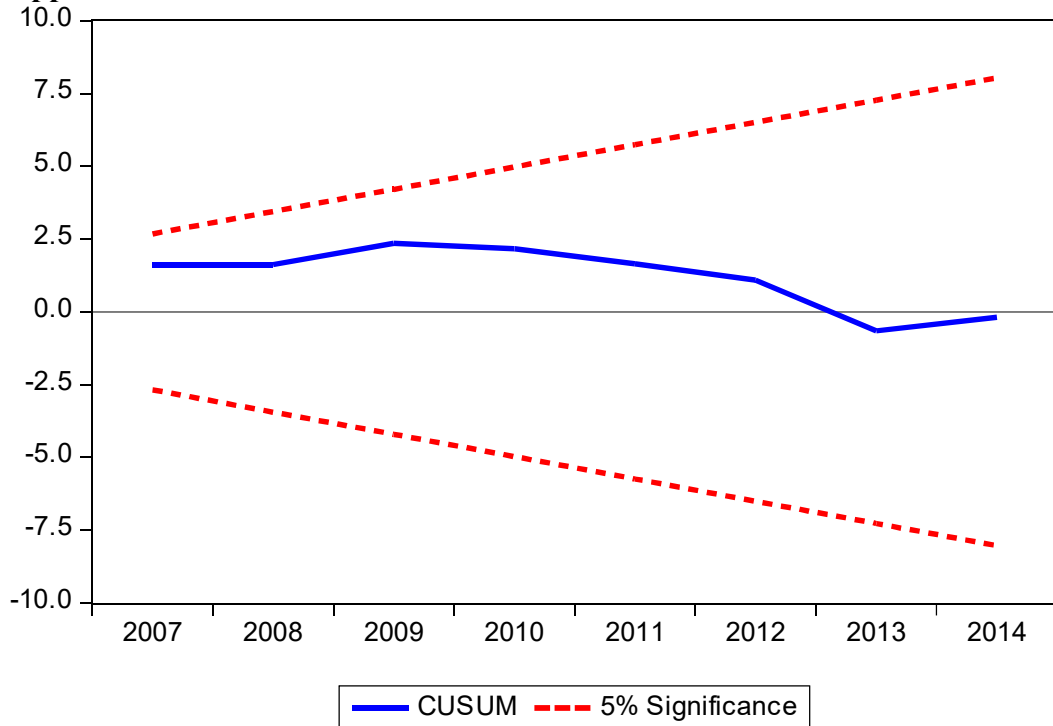


### Appendix 22 Jacque Bera Test for Normal Test

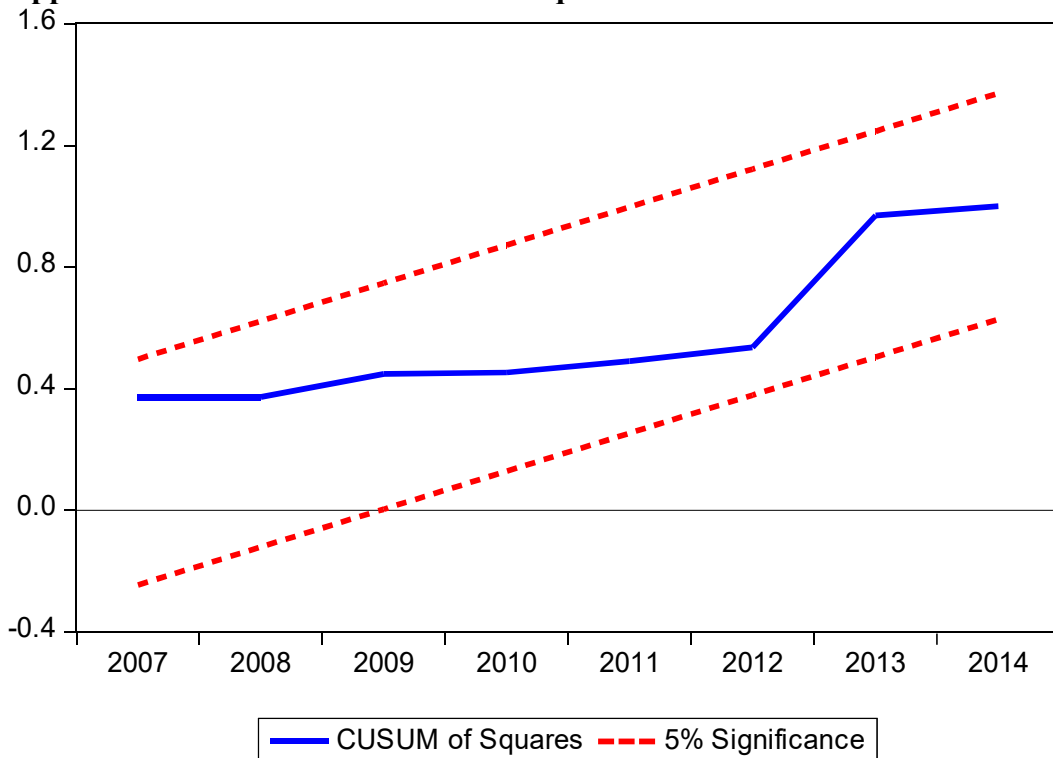


Series: Residuals	
Sample 1983 2014	
Observations 32	
Mean	-7.82e-14
Median	-0.005403
Maximum	2.427095
Minimum	-3.243877
Std. Dev.	1.277305
Skewness	-0.252335
Kurtosis	3.970816
Jarque-Bera	1.596234
Probability	0.450176

### Appendix 23 A Plot of the CUSUM Test



### Appendix 24 A Plot of the CUSUM of Squares Test



**Source:** Authors estimates using EViews 10

*Note: the CUSUM test in the ARDL states from 2007 due to the lags variables present in the ARDL model thus resulting in a loss of the sample size.*

### Appendix 25 Data Used for The Empirical Results

Time	NS	RGDP	Debt	INF	INTR	FD	FIAD	REMIT	TRAD	DR
1981	14,59004	20,75946	105,295	5,9	16,18	25,1869	31,33179	0,13	105,9271	4,555244
1982	22,2469	13,51761	111,8039	10,9	3,07	25,67877	21,99733	0,09	95,83902	4,568715
1983	20,82377	-7,61986	72,23238	10,6	14,92	28,57954	20,22322	0,33	95,04143	4,573096
1984	16,30263	3,649286	108,8666	22,1	8,26	26,71177	29,00967	0,33	121,9617	4,574741
1985	17,89505	2,363742	116,0387	18,3	-17,89	29,23374	19,14137	0,33	100,0096	4,577003
1986	14,68998	2,800263	121,3122	56,3	-8,91	21,44057	47,33896	0,33	89,08139	4,576352
1987	17,48714	1,70249	126,2137	23,5	7,95	22,00987	41,23739	0,33	112,6474	4,574896
1988	19,46733	4,33145	120,0127	11,7	18,08	22,03471	30,60422	0,33	105,1766	4,572984
1989	19,4478	5,695949	96,71934	8,3	11,51	22,10011	36,91433	0,33	111,9323	4,568409
1990	17,75112	2,163188	89,05143	12,2	12,98	20,65765	33,35676	0,33	127,2466	4,559395
1991	18,60674	4,420505	75,18353	8,6	-45,98	10,76107	14,85286	0,33	128,174	4,573751
1992	19,36888	6,129697	90,51925	9,5	24,33	11,62013	15,64562	0,33	137,1637	4,582461
1993	15,91372	3,832954	79,74303	6,5	19,92	12,09792	11,53353	0,33	131,8146	4,585391
1994	15,35804	-3,39753	98,10855	1,7	20,45	11,19879	9,456942	0,33	123,1788	4,583787
1995	22,42291	6,146402	105,4502	7	20,27	12,19602	5,895153	0,33	96,0161	4,579075
1996	12,94999	4,933591	108,9263	1,1	15,81	11,6456	4,333439	0,33	112,3439	4,579813
1997	18,73802	6,500378	107,6635	2,8	33,47	14,51802	4,987965	0,33	94,55875	4,576256
1998	16,40624	6,398798	116,7077	1,1	18,94	14,6656	4,840585	0,33	108,5244	4,569792
1999	15,47364	5,52489	117,7584	3,8	27,1	15,83717	4,371097	0,33	97,7108	4,561939
2000	-1,11676	5,753038	85,43143	0,8	21,31	19,80051	6,595091	0,33	67,58324	4,554084
2001	5,70008	-3,24695	131,4161	4,5	21,8	21,95304	8,035855	0,33	83,39201	4,557641
2002	1,214665	6,874319	110,9725	8,6	12,33	27,80646	11,82311	0,33	69,6405	4,558988
2003	2,722154	7,045586	116,7055	17	14,56	32,89863	13,63066	11,1	68,76232	4,558997
2004	19,696	-0,94168	112,0321	14,2	16,82	32,20606	10,98974	10,5	81,59811	4,568212
2005	11,63869	1,1241	111,7248	4,8	30,24	33,91074	10,09756	9,5	82,18575	4,556805
2006	17,36423	3,631026	116,3209	2,1	27,29	41,6642	11,93675	9,74	81,34759	4,561063
2007	10,79316	5,734642	42,33374	5,4	22,65	41,16207	12,5741	6,97	71,08728	4,563348
2008	2,697628	6,449696	38,0374	4,4	24,5	45,09066	10,0651	6,71	63,48546	4,563396
2009	7,287775	6,526297	43,05804	4,6	20,74	46,24381	14,34392	8,86	66,84312	4,560958
2010	5,409239	-4,29512	42,29369	5	21,68	49,04656	13,13594	12,15	65,78465	4,556201
2011	3,635353	5,273768	43,18049	4,8	22,64	54,94531	15,66338	11,93	65,01406	4,554009
2012	6,055527	6,347488	44,37778	4,3	23,32	53,43393	15,77943	15,45	73,07139	4,549321
2013	1,667617	-0,6975	43,41502	5,7	20,81	55,30506	12,81165	19,99	64,69633	4,542611
2014	7,086413	4,059486	39,17102	5,9	18,88	56,03871	12,39156	21,28	57,93077	4,534395

Note: All data are in percentage or log form