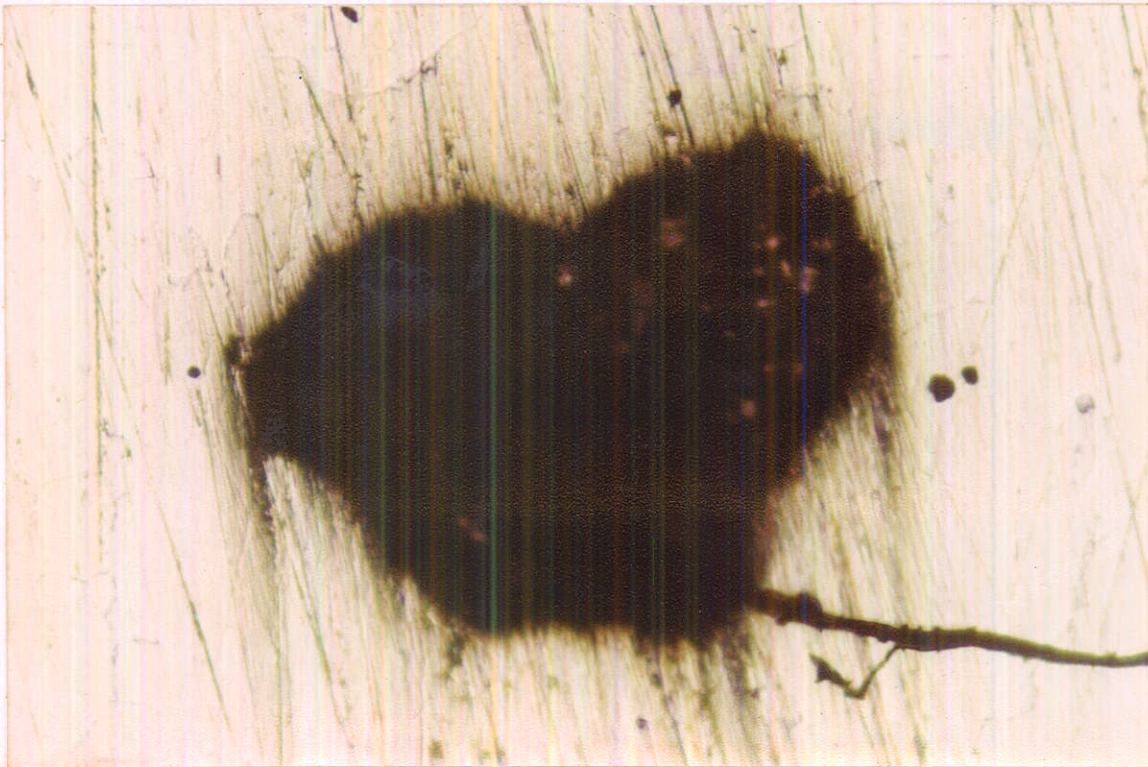
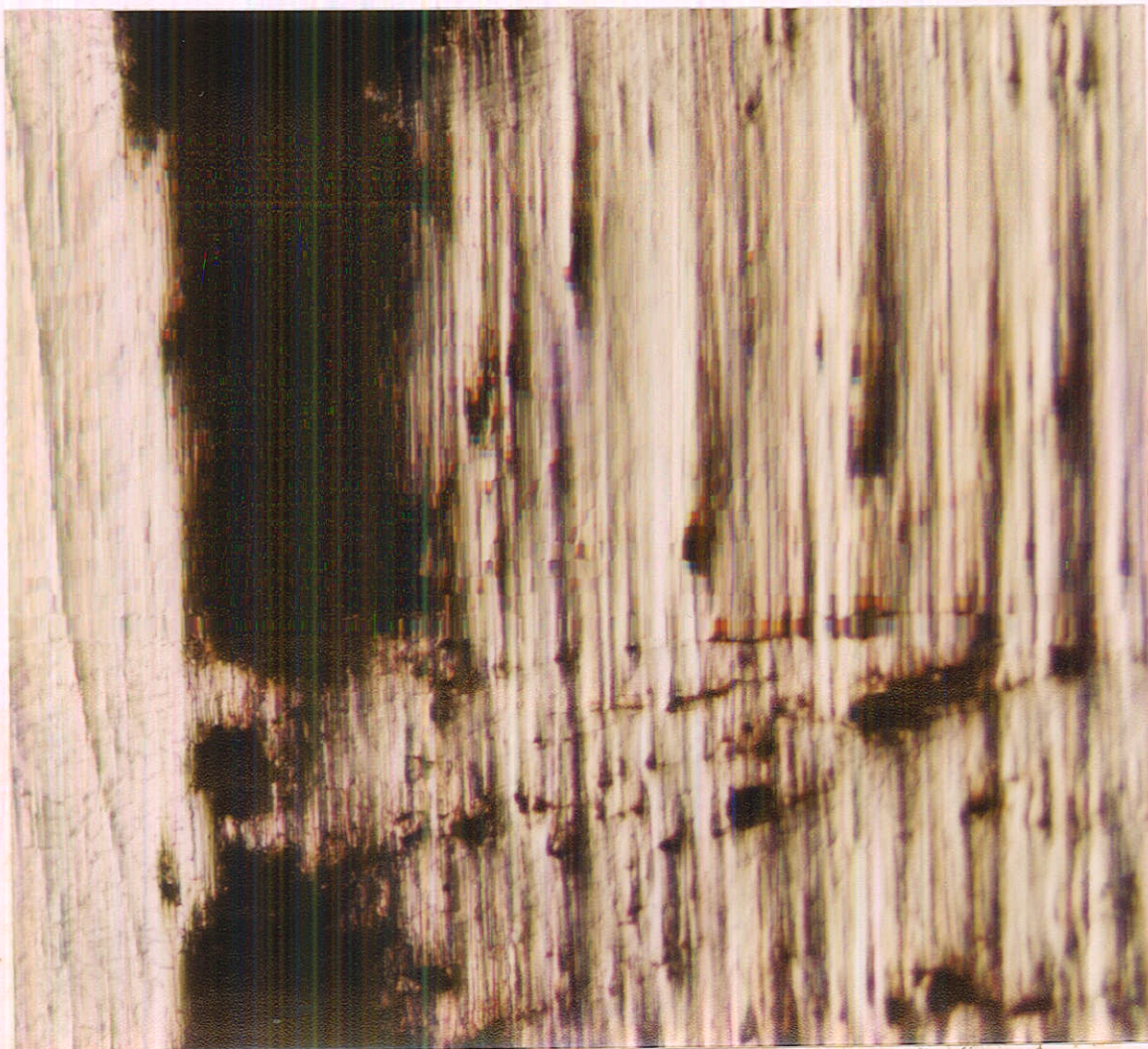


- Beumer, B.J.M. , *Ilmu Bahan Logam*, jilid 2, cetakan 1, PT Bhratara Karya Aksara, Jakarta, 1979.
- Cooper, G.D. , Technical Director Heatlock Engineering-Ltd. Southall, England, *Die Design for LPPM Casting*, part 1, Publication March 1972.
- Dieter, G.E. , *Metallurgi Mekanik*, jilid 1, edisi ketiga, Penerbit Erlangga, Jakarta, 1990.
- Heine, R.W. , Loper, C.R. , Rosental, P.C. , *Principle of Metal Casting*, edisi 2, 1982.
- Hesse, A.H. , Metallurgical Engineer R. Lavin & Son Inc. Chicago, *Basic Aluminium Practise*, American Foundrymen's Society Tech Report, 1972.
- Kaye, A. , Chief Metallurgist Diecasting - Ltd. London. Arthur S, *Die Casting Metallurgy*, Butters Worths & Co( Publisher ) Ltd. 1982.
- Kirk, R.E. , Othmer, D.F. , *Encyclopedia of Chemical Technology*, volume I.
- Lyon, R.N. , *Liquid Metal Handbook*, June 1952.
- Mc.Graw -Hill Book Company Inc. , Mc.Graw - Hill *Encyclopedia of Science and Technology* , volume I.
- Nazir, M. , *Metode Penelitian*, cetakan pertama 1985.
- Scheeren, H.W. , Chief Engineer, Honsel - Werke AG, Meschede, West Germany, *LPPM ( Low Pressure Permanent Mold ) at Honsel - Werke AG*, Foundry Management & Technology, A. Penton/IPC, Publication March 1980.
- Seurin, R. , President and Managing Director Fonderiede Precision - Virax, Nauterre, France, *Low Pressure Permanent Molding in Europe*, Foundry Management & Technology, Publication March 1980.
- Staf Laboratorium Ilmu Logam, *Panduan Praktikum Ilmu Logam*, Jurusan Teknik Mesin FT UGM, Yogyakarta.
- Sudia, T. , Chijiwa, K , *Teknik Pengecoran Logam*, PT Pradnya Paramita, Jakarta, cetakan kelima, 1986.
- Sudia, T. , Saito, S. , *Pengetahuan Bahan Teknik*, PT Pradnya Paramita, Jakarta, cetakan kedua, 1992.
- Taylor, H.F. , Fleming, M.C. , Wulff, J. , *Foundry Engineering*.



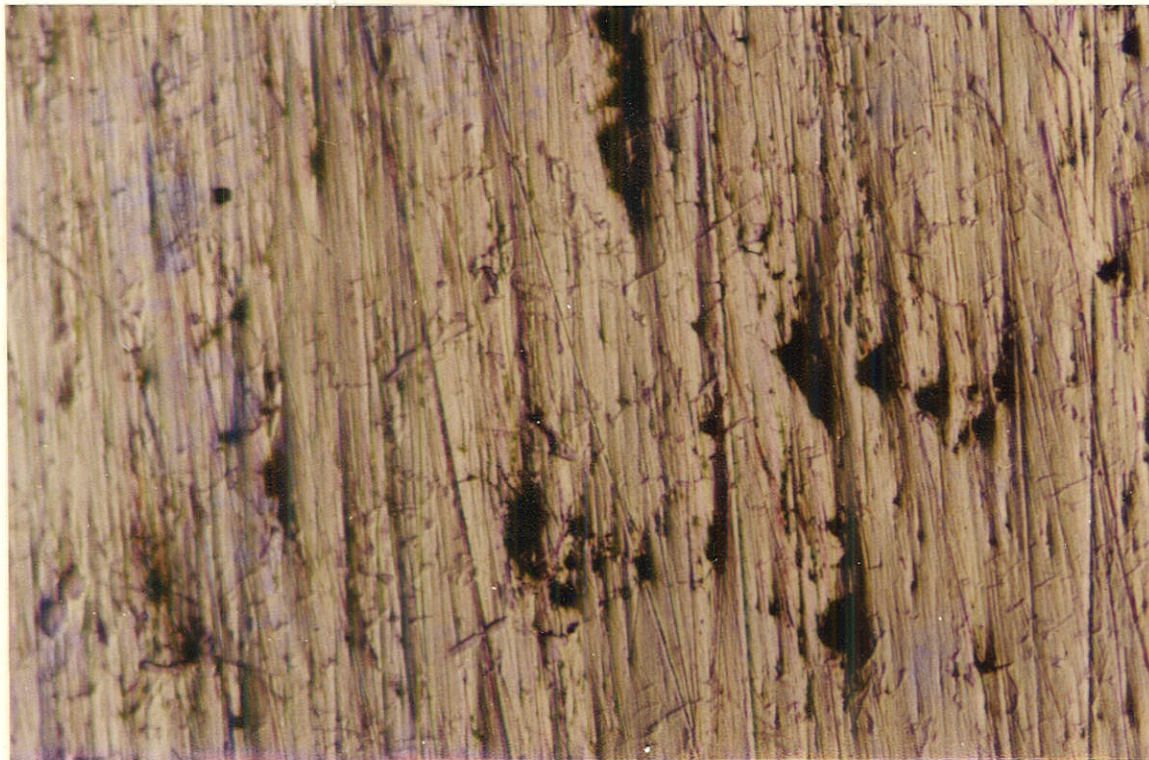


Gambar 1 : Foto spesimen 5 dari coran pasir cetak



Gambar 2 : Foto spesimen 6 dari coran bertekanan rendah





Gambar 3 : Foto spesimen 7 dari coran bertekanan rendah



Gambar 4 : Foto spesimen 8 dari coran bertekanan rendah

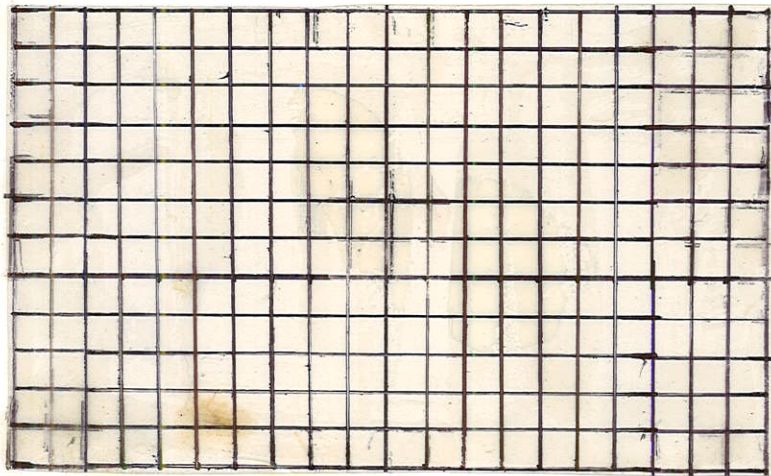


UNIVERSITAS  
GADJAH MADA

**DAFTAR PUSTAKA** Penelitian Sifat-Sifat Fisis dan Mekanis Komponen Kereta Api Sebelum dan Sesudah Pengolahn Panas

Adi Sutopo Suharyo , Ir. Samsudin

Universitas Gadjah Mada, 1995 | Diunduh dari <http://etd.repository.ugm.ac.id/>



Gambar 5 : Susunan kotak pengukur porositas